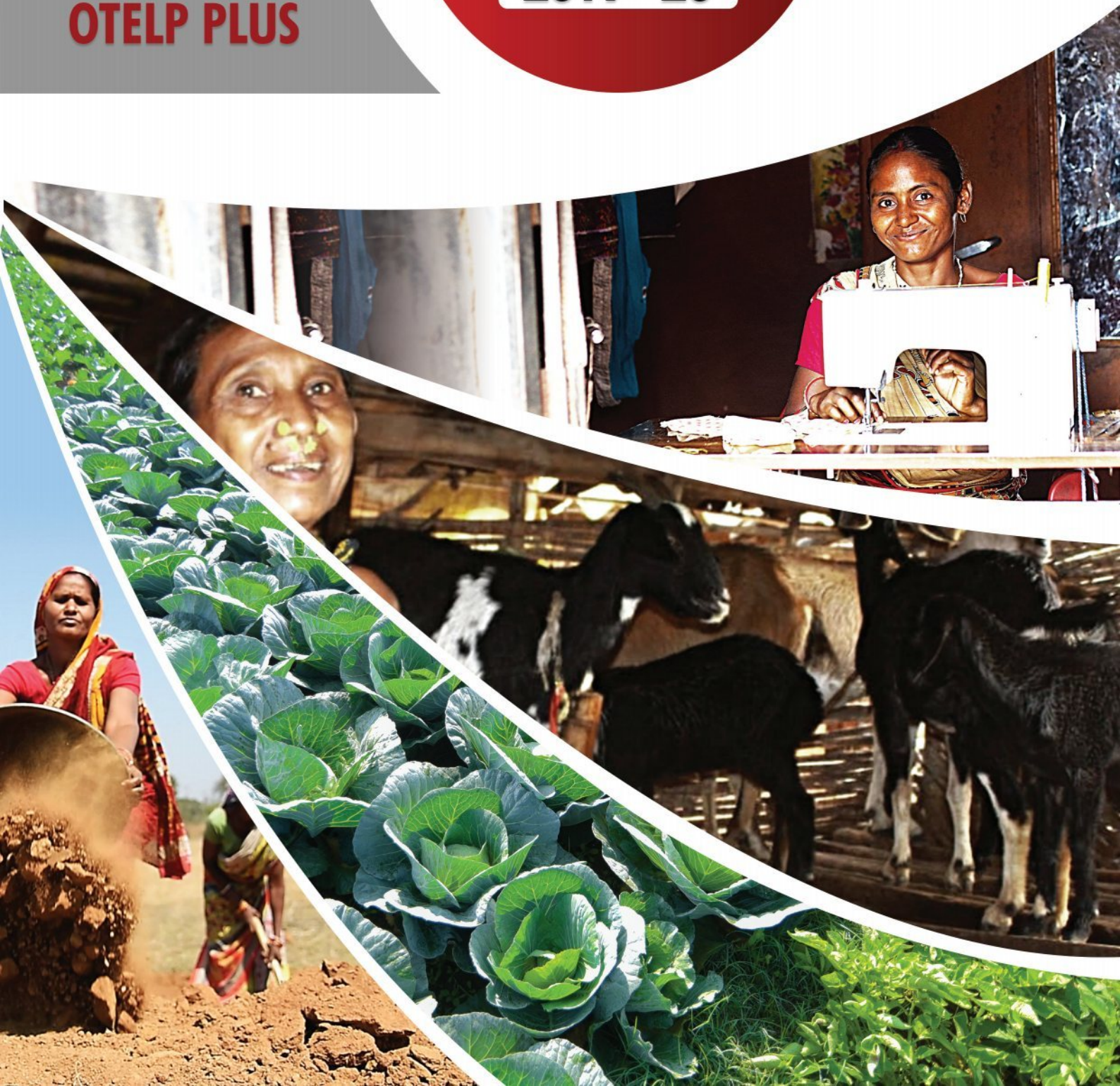




ODISHA TRIBAL  
EMPOWERMENT  
& LIVELIHOODS  
PROGRAMME -  
PLUS  
**OTELP PLUS**

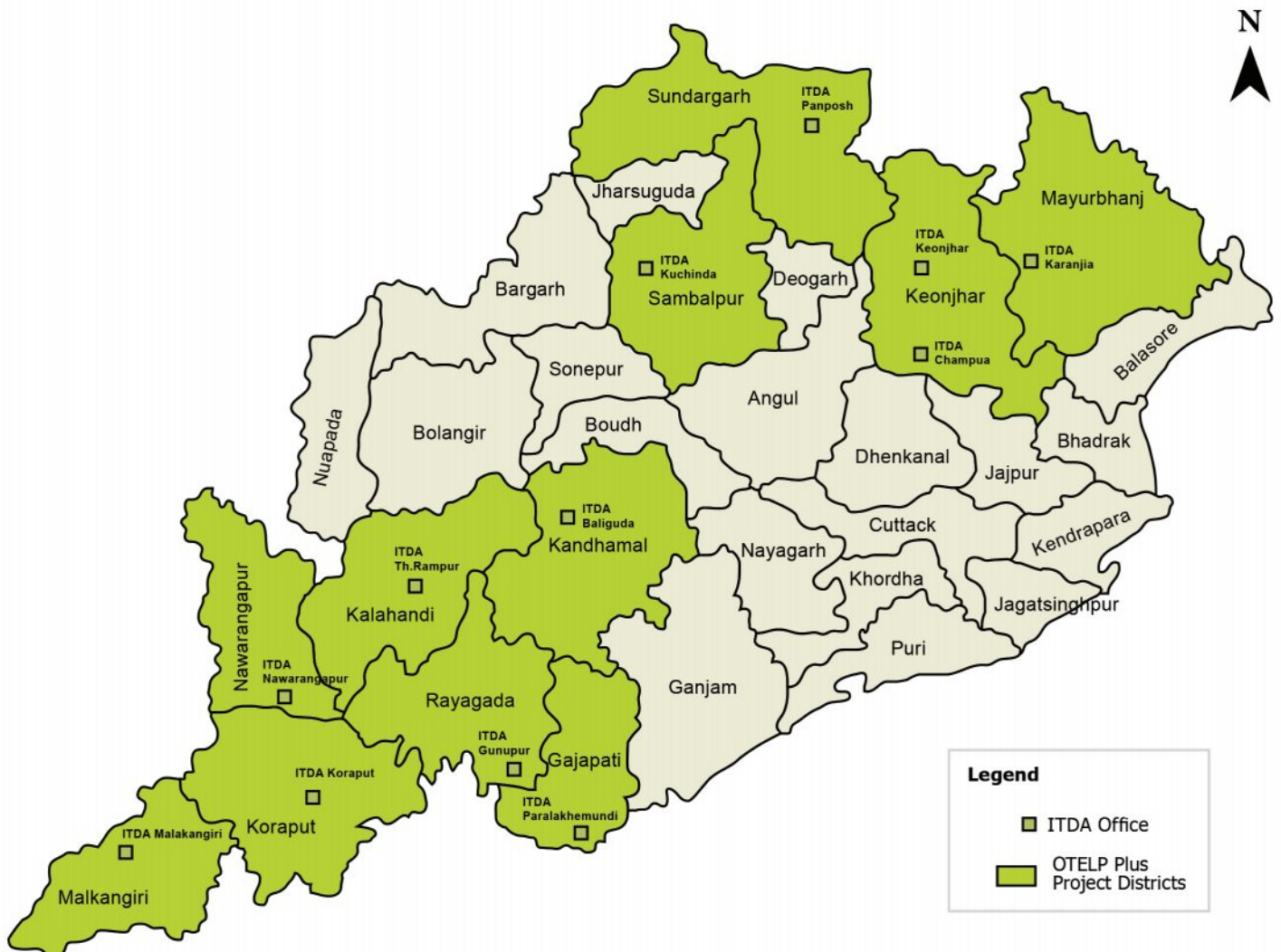
# ANNUAL PROGRESS REPORT

— 2019 - 20 —



# LOCATION MAP

## of OTELP Plus Programme Areas





# ANNUAL PROGRESS REPORT — 2019 - 20 —

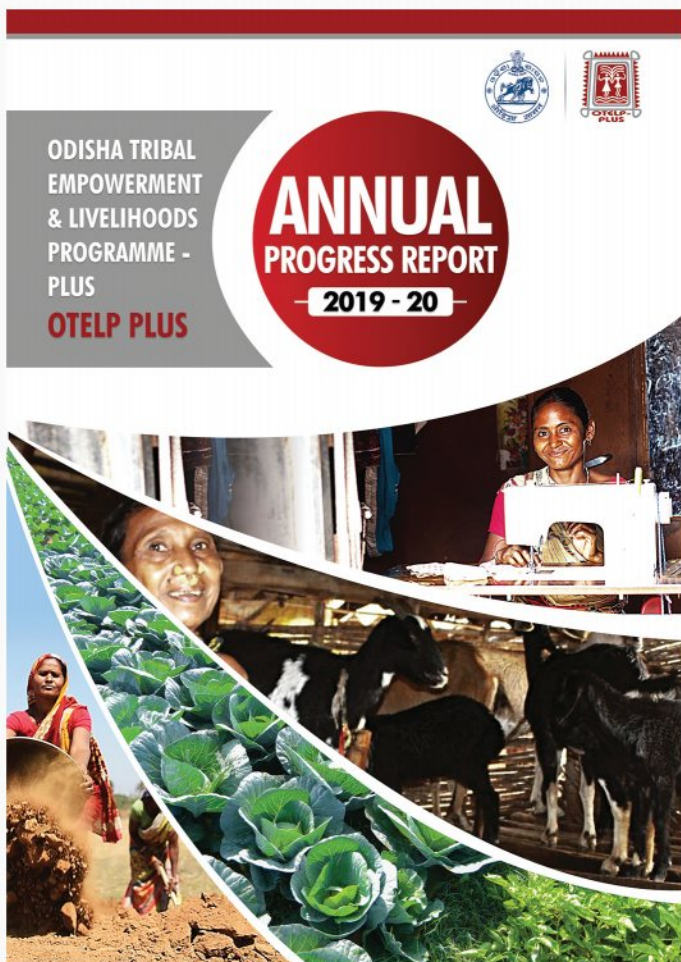
Odisha Tribal Empowerment  
& Livelihoods Programme - Plus  
- **OTELP Plus** -

## - PROGRAMME SUPPORT UNIT -

📍 TDCCOL Building, 2<sup>nd</sup> Floor, Rupali Square, Bhoi Nagar,  
Sahid Nagar, Bhubaneswar, ODISHA - 751022

☎ 0674 - 2541 772 | ✉ support@otelp.org | 🌐 www.otelp.org





## EDITORIAL BOARD

### ADVISOR

Smt. Ranjana Chopra, I.A.S  
Principal Secretary to Govt,  
ST&SC Development, Minorities &  
Backward Classes Welfare Department,  
Govt. of Odisha

### EDITOR

Shri P. Arthanari, I.F.S  
Programme Director, OTELP Plus

### COMPILATION & CONTENT DEVELOPMENT

**Shri Milan Sahoo**  
State Programme Officer (Capacity Building)

### DATA ANALYSIS & M.I.S

Smt. Kalyani Mishra  
Manager (M.I.S), PSU

### CONCEPT & GUIDANCE

Sri Amalendu Dash, P.O (I.B)  
Dr. Bhagaban Dash, P.O (Livestock)  
Sri Sankarsan Rout, P.O (Agriculture)  
Smt. Devi archana Ashe, P.O(PM&E)  
C.A Jalendra Padhiary, P.O (Finance)  
Sri Purandar Karna, F&A.O  
Sri Chandan Sahoo, P.O (Engg.&NRM)

### Programme Support Unit

OTELP Plus  
December, 2020

## - TABLE OF CONTENTS -

Chapter	Topics	Page no.
1	Message -----	1
2	Abbreviations & Acronyms -----	2
3	Introduction -----	3
4	Programme Components -----	4
5	Yearwise Financial Progress -----	5
6	Major activities and achievements -----	6
7	Innovations & Critical Interventions -----	7
7.1	E.P.A, -----	8
7.2	P.M.V.D.Y. -----	9
7.3	G.O.A.L -----	10
8	Success Stories -----	11
9	Photo Speaks -----	12
10	Administrative Structure of the Programme -----	13

Renovation of community pond supported under MGNREGS at village-Khintapada, ITDA Champua



## ABBREVIATIONS USED

R.K.V.Y	Rashtriya Krishi Vikash Yojana
A.W.P.B	Annual Work Plan and Budget
VDA	Village Development Association
VDC	Village Development Committee
E.P.A	Entry Point Activities
SCA-TSS	Special Central Assistance-Tribal Sub scheme
CTCRI	Central Tuber Crops Research Institute
CHES	Central Horticulture Experiment Station
MGNREGS	Mahatma Gandhi National Rural Employment Guarantee Scheme
KVK	Krishi Vigyan Kendra
PSU	Programme Support Unit
MWS	Micro Watershed
ITDA	Integrated Tribal Development Agency
SHG	Self Help Group
PG	Producer Group
I.G.A	Income Generation Activities
P.R.A	Participatory Rural Appraisal
CSP	Community Service Provider
PMVDY	Pradhan Mantri Van Dhan Yojana
GOAL	Going online as Leaders
MSP	Minimum Support Price
PMAY	Pradhan Mantri Awas Yojana
O.A.I.C	Odisha Agro Industries Corporation
O.L.I.C	Odisha Lift Irrigation Corporation
I.H.H.L	Individual Household Latrine
VDLP	Village Development & Livelihood Plan
Ha.	Hectare
GoO	Govt. of Odisha
TDCCOL	Tribal Development Cooperative Corporation of Odisha Limited
S.R.I	System of Rice Intensification
VDVK	Van Dhan Vikash Kendra
KBK	Kalahandi Balangir Koraput
D.I.F	Development Initiative Fund
C.I.F	Community Infrastructure Fund
MoTA	Ministry of Tribal Affairs
BKBK	Biju KBK
BKoGY	Biju Kandhamal O Gajapati Yojana
DMF	District Mineral Fund
ICAR	Indian Council of Agricultural Research
SCSTRTI	Scheduled Castes and Scheduled Tribes Research and Training Institute
NRM	Natural Resource Management
L&WM	Land and water management
W.A.D.I	Wasteland Agriculture Development Initiative



## **Smt. Ranjana Chopra, I.A.S**

Principal Secretary to Govt-cum-Chairman, OTELP Plus  
ST&SC Development, M&BCW Department,  
Govt. of Odisha, Bhubaneswar

### **MESSAGE**



Odisha Tribal Empowerment & Livelihoods Programme Plus (OTELP Plus) is a replication of OTELP being implemented by the Scheduled Tribe & Scheduled Caste Development Department of Govt. of Odisha with financial aid from State Plan, Govt. of Odisha and in convergence with other ongoing schemes & programmes of the State & Central Govt. The programme aims “to ensure that livelihoods and food security of poor tribal households are sustainably improved through promoting a more efficient equitable self managed and sustainable exploitation of the Natural Resources at their disposal and through farm/non-farm enterprise development”. At Present, the programme is continuing its Phase – III (OTELP Plus) operation covering 1744 villages spread over 616 micro watersheds with 90069 households. The programme adopts sustainable approach for livelihood enhancement of tribal households by improving the productivity from existing natural resources in 7 years of programme cycle. This programme purely managed, owned and controlled by the people forming community institutions at different level.

The programme focuses on empowering the tribals through intervention of long term livelihoods activities. A strong emphasis is placed on promoting participatory processes, building community institutions, fostering self-reliance and respecting the indigenous knowledge and values of tribals.

It gives me immense pleasure to present this publication “ANNUAL PROGRESS REPORT 2019-20” reflecting various developmental activities in the programme areas. This report showcases many ways in which OTELP Plus support work at Tribal area to turn the aims of the overall development of the Tribal community & bring back them into mainstream. This report contains the process how OTELP Plus emphasized on evolution of Tribal & strategy to make them vigilant towards sustainable. It comprises of sharing knowledge, highlighting success stories and acts as a path finder for others.

(Smt. Ranjana Chopra)



Domestic drinking water supply project under D.I.F, ITDA Keonjhar



Dug-well Platform at Rajabasa village of Kechhupata GP, ITDA Kuchinda

ଓଡ଼ିଶା ସରକାରଙ୍କ ଦ୍ଵାରା ପ୍ରଦତ୍ତ ଉପକ୍ରମ ଓ ଜାରିକା ନିର୍ବାହ କାର୍ଯ୍ୟାଳୟ  
 ବର୍ଷ - ୨୦୧୯ - ୨୦୧୦  
 ଉଦ୍ଦେଶ୍ୟ ଶୁଦ୍ଧ ପାନୀୟ ଜଳର ଉତ୍ପାଦନ, ରକ୍ଷାକର୍ତ୍ତା  
 କାର୍ଯ୍ୟକ୍ରମ -  
 Improvement of  
 DUGWELL PLAT FORM  
 କାର୍ଯ୍ୟକ୍ରମ - ଉଦ୍ଦେଶ୍ୟ  
 ବ୍ଲକ୍ - କାଗଡ଼ା  
 ଜିଲ୍ଲା - ସମ୍ବଲପୁର  
 ଅଞ୍ଚଳ - ଗାନ୍ଧୀ - ୯ - ୪୧,୦୦୦/- ଶତକଡ଼ା  
 କାର୍ଯ୍ୟ ଆରମ୍ଭ ତା - ୧୨-୦୨-୨୦୧୯  
 କାର୍ଯ୍ୟ ଶେଷ ତା -  
 ଅଧିକ ବିବରଣୀ ପାଇଁ





## Sri P. Arthanari, I.F.S

Programme Director, OTELP Plus  
ST & SC Development, M & BCW Department,  
Govt. of Odisha, Bhubaneswar

### MESSAGE



The Goal of OTELP Plus is to empower the tribal community, enabling them to enhance their livelihood , income & improve the overall quality of life through sustainable exploitation of the natural resources at their disposal and through various farm/non-farm based livelihood interventions.

It gives me immense pleasure to intimate that Programme Support Unit, OTELP Plus is going to publish its Annual Progress Report for the year 2019-20, which not only contains the activities taken place so far but also the success stories of various livelihood activities taken up & challenges experienced in programme villages . It is a vehicle to keep implementers updated on current successful development initiatives, its impact and best use of the information. We truly urged to strengthen and scale up existing innovative mechanisms and explore new one.

This publication attempts to capture and provide the success stories, impacts achieved and trends emerging in the programme as well as in the sector of livelihoods promotion. The programme is successfully moving towards becoming a developmental model in Odisha.

Much has been achieved and even more are to be achieved. With the current developmental challenges before the programme, I wish the dedicated OTELP Plus team and the programme in attaining its objective and benefit the tribal community of Odisha.

  
(P.Arthanari)



Mango graft distribution  
at village Kukum, k.jamankira GP , ITDA Kuchinda



Manga Plantation  
at kechhupani Village in convergence with MGNREGS

ମହାତ୍ମା ଗାନ୍ଧୀ  
ଜାତୀୟ ଗ୍ରାମୀଣ ନିର୍ମୂଳ କର୍ମ ନିୟୁତ୍ତ ଯୋଜନା  
(ଓଡ଼ିଶା)

ଗ୍ରାମ:-କେନ୍ଦୁସାମି , ଗା:ପ:-ଭୁବନେଶ୍ୱର  
ବ୍ଲକ:-ବାମରା , ଜିଲ୍ଲା:-ପ୍ରମୁଖପୁର

କାର୍ଯ୍ୟର କୋର୍ଡ ନମ୍ବର:-2401/DP/10391891

କାର୍ଯ୍ୟର ନାମ:- ପୁରାଣ ଆମ୍ବ କର୍ମ

ପ୍ରତିଧା କାର୍ଯ୍ୟ କ୍ଷେତ୍ର:- ସୌରାମିଳା ନାଏକ, ସୁନିଲ କୁମାର ନାଏକ, ପ୍ରକାଶନାଥ  
ଆର୍ଥିକ ବର୍ଷ - ୨୦୨୦-୨୧, ଦୈନିକ ମୂଲ୍ୟ:- ଟ. ୨୦୭/-  
ପ୍ରକଳ୍ପର ଅନୁମୋଦିତ ମୂଲ୍ୟ:- ଟ. ୩,୨୭,୦୦୦/-

କାର୍ଯ୍ୟ ଆରମ୍ଭ ତା:- ୦୨-୦୫-୨୦୨୦ , କାର୍ଯ୍ୟ ଶେଷ ତା:-  
ଅନୁମୋଦିତ ଗ୍ରଣିତ ଅର୍ଥ:- ୨୩୫,୦୦୦/- , ସ୍ଥାନଗ୍ରା ଅର୍ଥ:- ୧.୨୨,୦୦୦/-  
ଅନୁମୋଦିତ ଗ୍ରଣିତ ବିକସ୍ (ଅନୁମୋଦିତ):- ଅନୁମୋଦିତ ଗ୍ରଣିତ ବିକସ୍ (ସ୍ୱତନ୍ତ୍ର):-

ମାଧ୍ୟମିକ ପଦକ - ମିଶ୍ର

କାର୍ଯ୍ୟ ନିର୍ବାହୀ ସ୍ୱର୍ଗା:- SIDI/OTELP-RLUIS ବାମରା, ITDA କୁଚିନ୍ଦା  
ଅନୁମୋଦିତ ନାମ/ଆମ୍ବକ କର୍ମ ଅଧିକାରୀଙ୍କ ନାମ ଓ ଠିକଣା ଯୋଗ କରନ୍ତୁ  
ମାଧ୍ୟମିକ ପଦକ - ମିଶ୍ର :- ୧୧୦୦୩୨୫୭୭୮



# ABOUT OTELP Plus

The Odisha Tribal Empowerment and Livelihoods Programme Plus (OTELP Plus) is a replication of OTELP being implemented by the Scheduled Tribe & Scheduled Caste Development Department of Govt. of Odisha with financial aid from State Plan, Govt. of Odisha and other ongoing schemes & programmes of the State & Central Govt. The programme aims **“to ensure that livelihoods and income of the poor tribal household are sustainably improved through promoting a more efficient equitable self managed and sustainable exploitation of the Natural Resources at their disposal and through farm/non-farm enterprise development”**.

## The core objectives framed to attain the Programme goal are to;

- ✓ Build the capacity of marginalized groups as individual and grass root institution.
- ✓ Enhance the access of poor tribal people to land, water and forest and increase the productivity of these resources in environmentally sustainable and socially equitable ways;
- ✓ Encourage and facilitate off-farm enterprise development focused on the needs of poor tribal households;
- ✓ Monitor the basic food entitlements of tribal households and ensure their access to public food supplies;
- ✓ Strengthen the institutional capacity of government agencies, Panchayati Raj Institutions, NGOs and civil society to work effectively on a participatory mode for poverty reduction with tribal communities;
- ✓ Encourage the development of a pro-tribal enabling environment through ensuring that legislation governing control of and access to, development resources by poor tribal households is implemented effectively and recommending other policy improvements;
- ✓ Build on the indigenous knowledge and values of tribal and blend these with technological innovations to ensure a speedier pace of development



**Selling of hybrid brinjal**  
by SHG members in the local haat supported  
under SCA TSS at village-Luaram, ITDA Panposh





Booklet on "Management of COVID 19 in OTELP Plus Programme areas" unveiled by Principal Secretary, ST & SC Development, M & BCW Department in presence of other dignitaries



Review Meeting  
Chaired by Programme Director, OTELP Plus

The OTELP Plus is being implemented in phased manner. This was piloted in Koraput and Malkanagiri during the year 2011 and in subsequent year it was implemented in other OTELP & Non-OTELP ITDAs. This programme was launched by the Hon'ble Chief Minister of Odisha on 19th April 2011.

The programme adopts strategic participatory approach among all stakeholders. Communities are considered as the primary stakeholders who are facilitated by the FNGOs followed by technical backstopping from ITDA & PSU. The programme basically aims upon G.O & N.G.O partnership mode for adding synergetic effect in order to work jointly for enhancing the capacity of the communities to take up sustainable livelihood activities.



**SCT work**  
at Bankey village of Bankey, ITDA Kuchinda under MGNREGS





**Plantation material distribution**  
to dalkibahal Villagers of Kinabaga GP of Bamara Block



**Plantation pit digging**  
at Kechhupanai village of Uchhakapata GP of bamara Block

# CHAPTER 1

## 1.1 Our Coverage 2019-20

At present OTELP Plus programme is continuing in 616 MWS covering 11 Districts and 12 ITDAs.

Districts	ITDAs	Blocks	GPs	MWSs	Villages	HHs	TAs
11	12	40	209	616	1744	106998	297206

## Programme Coverage During 2019-20

Sl. No	District	ITDA	No of MWS	Villages	Treatable Areas (Ha.)
01	Kandhamal	Baliguda	30	92	15623
02	Kalahandi	Th.Rampur	22	53	9116.3
03	Koraput	Koraput	40	155	20601.18
04	Gajapati	Paralakhemundi	20	57	10206.74
05	Rayagada	Gunupur	100	534	55984.95
06	Malkangiri	Malkangiri	30	85	15819
07	Nawarangpur	Champua	29	49	15081.74
08	Keonjhar	Keonjhar	118	172	30107
		Champua	52	227	22500
09	Mayurbhanj	Karanjia	70	108	20512.462
10	Sundargarh	Panposh	55	87	35780
11	Sambalpur	Kuchinda	50	125	27511
		<b>Total</b>	<b>616</b>	<b>1744</b>	<b>297206.27</b>



Tomato bed raising  
at Kechhupani villages of Uchhhakpat of Bamara



Support to ultra poor household for grocery shop  
Supported under State Plan, ITDA Th. Rampur



Field bonding  
at vill-Burodih GP-Telitlemal OTELP Plus, ITDA -KUCHINDA under MGNREGS





## 1.2 Programme Coverage During 2020-21

Sl. No	ITDA	No of Blocks	Name of the Block	No of GPs	No of Villages	No of NSWs	Treatable Areas (Ha.)	No of HHs
01	Baliguda	3	Baliguda Daringbadi K. Nuagaon	17	92	30	15623	4631
02	Th. Rampur	2	Lanjigarh Th. Rampur	8	53	22	9116.3	1966
03	Koraput	4	Dasmantpur Semiliguda Potangi Nandapur	24	155	40	20601.18	7399
04	Paralakhemundi	2	R.Udayagiri Mohana	10	57	20	10206.74	2153
05	Gunupur	7	Gudari Chandrapur Kashipur Ramnaguda Gunpur Bissamcuttack Muniguda	36	534	100	55984.95	8100
06	Malkangiri	4	Mathili Khairiput Korkunda Chitrokunda	15	85	30	15819	4316
07	Nawarangapur	4	Papadahandi Jharigaon Kosagumuda	21	49	29	15081.74	9056
08	Keonjhar	1	Telkoi	22	84	64	20949	9730
09	Champua	3	Champua Jhumura Joda	12	227	51	22500	7109
10	Panposh	2	Nuagaon Gurundia	19	87	55	35780	7243
11	Kuchinda	3	Bamara Jamankira Kuchinda	11	125	50	27511	8104
<b>Total</b>		<b>34</b>		<b>195</b>	<b>1548</b>	<b>491</b>	<b>249173</b>	<b>69807</b>



**Field bonding under MGNREGA**  
at Rajabasa village of Rangiatikira GP under Bamara Block



**SCT Work**  
at Bankey village, ITDA Kuchinda in convergence with MGNREGS

## 07 Years Programme Implementation Cycle

### Initial Two Years Probation Phase

- Social Mobilization
- Institution Building and establishment of systems in participatory approach.
- Participatory approach in planning and executing the programme
- Building capacity of the various stakeholders.

### Middle Three years Implementation Phase

- Planning and Execution of the village development plan
- To focus on Natural Resource Management and Livelihoods Intervention.
- Skill Up-gradation Training
- Demonstrations, Exposures
- Credit Linkage, Micro Enterprise

### Last Two Years Withdrawal Phase

- Institutionalizing the process.
- Gradual Withdrawal of project
- Implementation of Sustainability Strategy
- Capacity Building for management of community assets
- Management of village development fund
- Convergence



Vermi compost pit layout  
at Sihira village of Bhojipur GP of Jamankira Block, ITDA Kuchinda



Field visit to OTELP Plus Programme Areas by Programme Director, ITDA Kuchinda



Promotion of improved broiler farming at village-K.Janiguda, ITDA Koraput

## 1.3 Funding Pattern:

Govt. of Odisha, is providing programme management support and all other components are being implemented through convergence from the ongoing programmes like MGNREGS, Biju KBK (BKBK), Biju Kandhamal O Gajapati Yojana (BKOGY), Rashtriya Krishi Vikash Yojana (RKVY), National Horticulture Mission (NHM), SCA to TSS, SCA to SCSP, Article 275, DMF etc.

## Project Strategy:

- ✓ Go-NGO partnership and programme implementation through CBOs.
- ✓ It adopts a Micro-Watershed approach with the objective of holistic tribal development
- ✓ Well-structured institutional mechanism and institutional set up.
- ✓ The community is at the core of implementation, and awareness & capacity building are given primary importance. All works are executed through the Village Development Committee.
- ✓ It addresses the basic issues pertaining to the tribal population, especially related to livelihood and natural resource management.
- ✓ Young dedicated team of professionals with relevant subject expertise and performance evaluation measurement.
- ✓ Phasing of project with adequate thrust on planning.
- ✓ Acceptance level of this model of governance is very high among the tribal population.



**Supply of Power Tiller**  
to VDC supported by SCA to TSS  
at village- Kulanga, ITDA Keonjhar

**Promotion of Lemongrass Cultivation**  
at Village-Narasingshpur,Banspal under OTELP Plus, ITDA Keonjhar



**2<sup>nd</sup> Year WADI Plantation**  
under MGNREGA, OTELP Plus, Paralakhemundi



**3<sup>rd</sup> Year WADI plantation**  
under MGNREGA, OTELP Plus, Nabarangpur



**Paddy Cultivation**  
at Purunasahi village Mohana, ITDA Paralakhemundi



## 1.4 Institution Building and Community Organisation

The programme adopts a public private -community partnership approach in implementation of the programme. In this PPCP mode, Government has taken the role of providing technical assistance and support, where the NGOs play the role of facilitator in capacitating the community and their institutions for planning, implementation, monitoring and governance. Community being the primary stakeholders (beneficiary) of the programme plays the role of implementer. They directly plan, execute and monitor the programme activities through their institutions like Self Help Group (SHG), User Group (UG) and Common Interest Group (CIG).

Micro watershed development approach as the basis for development of livelihood has been adopted as the framework of implementation. The programme adopts the institutional modalities prescribed by the MoRD, GoI, to ensure proper alignment of the programme with mainstream development programme. Thus at the micro watershed level (cluster of two to three villages) Village Development Associations (VDA) are constituted. All the adult members of the villages (more particularly the voters) living in the villages located within the micro watershed are the members of the VDA. This VDA is registered under the society's act 1860. The VDA has further constituted a committee called Village Development Committees (VDC), which is the executive body of the VDA. This committee holds 15 to 20 members comprising of the representatives from all the villages within the micro watershed. These representatives are either selected or elected from existing village based organizations such as Self Help Group (SHG), User Group (UG), and Traditional Institutions. The VDC has 50% women representation and representation of the marginalised groups like landless, disabled, widow etc.

The following table depicts the key roles of each category of stakeholders involved in the process of project implementation.





Support to Dityaang HH for income generation activity under State Plan , ITDA Karanjia



Selling of Horticultural produces by Farmers supported under SCA TSS at village-Luaram, ITDA Panposh





# CHAPTER 2

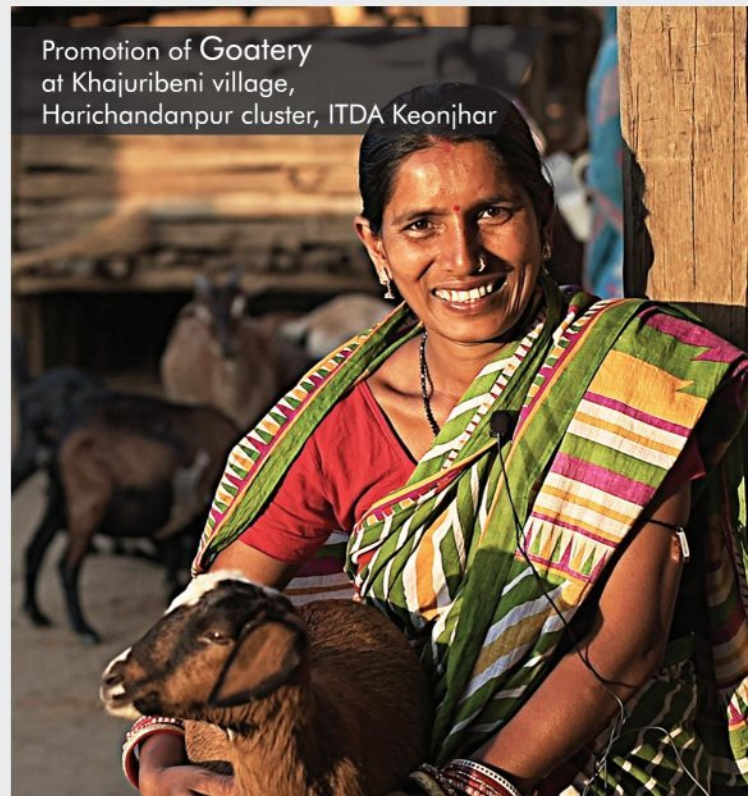
## Programme Components

### 2.1 Capacity Building for Empowerment

The basic delivery mechanism of the programme completely depends on the community based organizations, as they are the decision maker in the village. The programme should therefore facilitate in promoting the required community based organizations and also capacitate them in terms of managing the programme as well as enhancing their skill base to take up the programme implementation. The major component of Capacity Building is meant to develop the capacity of the implementers, facilitators and primary stakeholders in order to enable them for a better implementation of the programme activities as well as develop their own skills, knowledge, etc.

A comprehensive time-bound action plan for capacity building of different categories of personnel may be prepared keeping in view the sequence of activities and availability of resource organizations. Such plans on a long-term as well as annual basis may be prepared by ITDA keeping in view of the target in AWPB. Afterwards, these may be consolidated by the PSU team so that coordination and facilitation could be undertaken in consultation with the identified resource institutions.

Community capacity building often refers to strengthen the skills, competencies and abilities of people and communities in small and local grassroots movements so that they can achieve their goals and potentially overcome the causes of their exclusion and suffering. It often describes "the process by which people organizations and society systematically stimulate and develop their capability over time to achieve social and economic goals, including improvement of knowledge, skills, systems, and institutions."



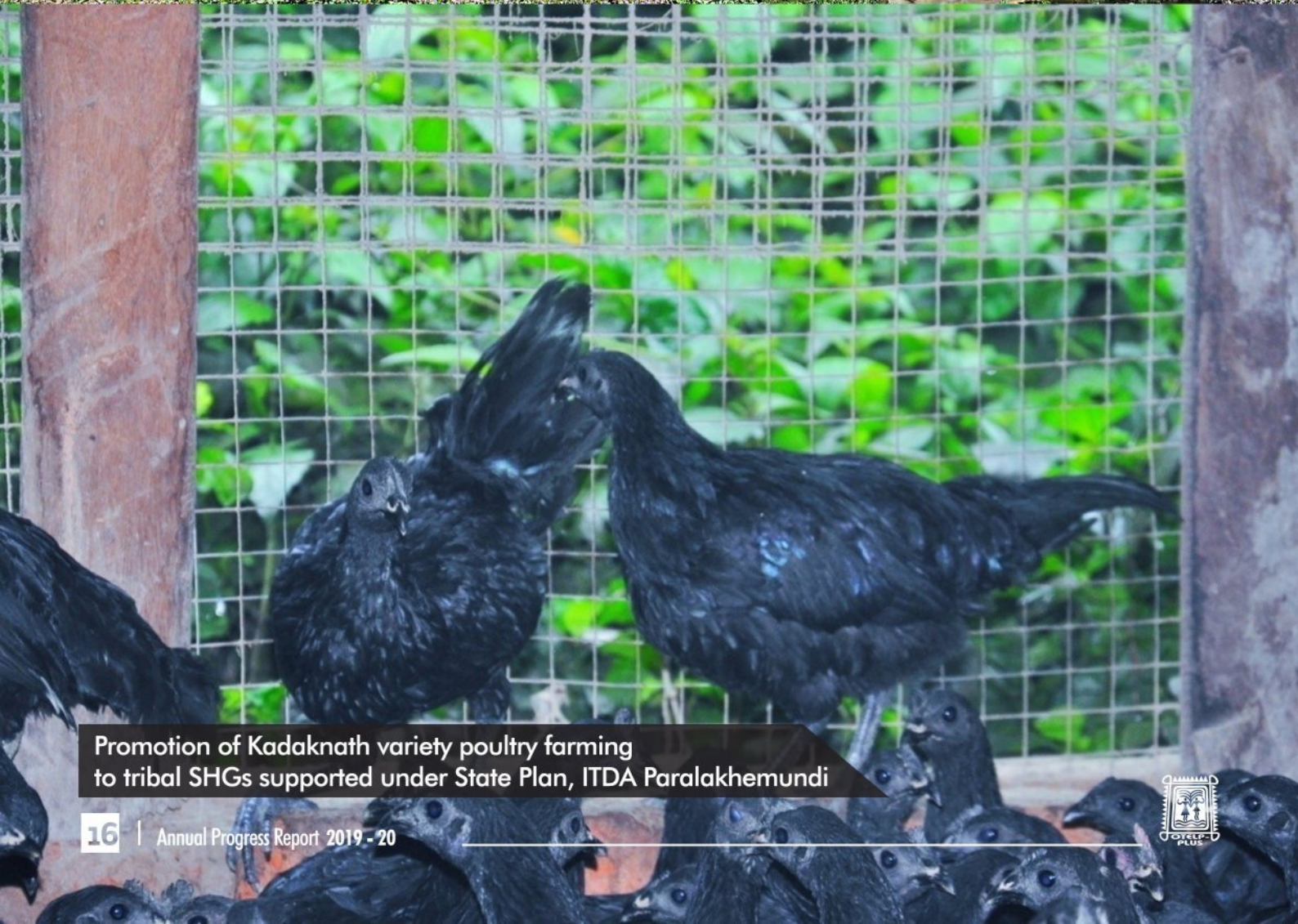
Promotion of Goatery at Khajuribeni village, Harichandanpur cluster, ITDA Keonjhar



Promotion of Improved Broiler Poultry farming at Village - K. Janiguda, ITDA Koraput.



**Check Dam**  
at Behedadi, Balliguda in convergence with MGNREGS



**Promotion of Kadaknath variety poultry farming**  
to tribal SHGs supported under State Plan, ITDA Paralakhemundi



## 1. Individual level

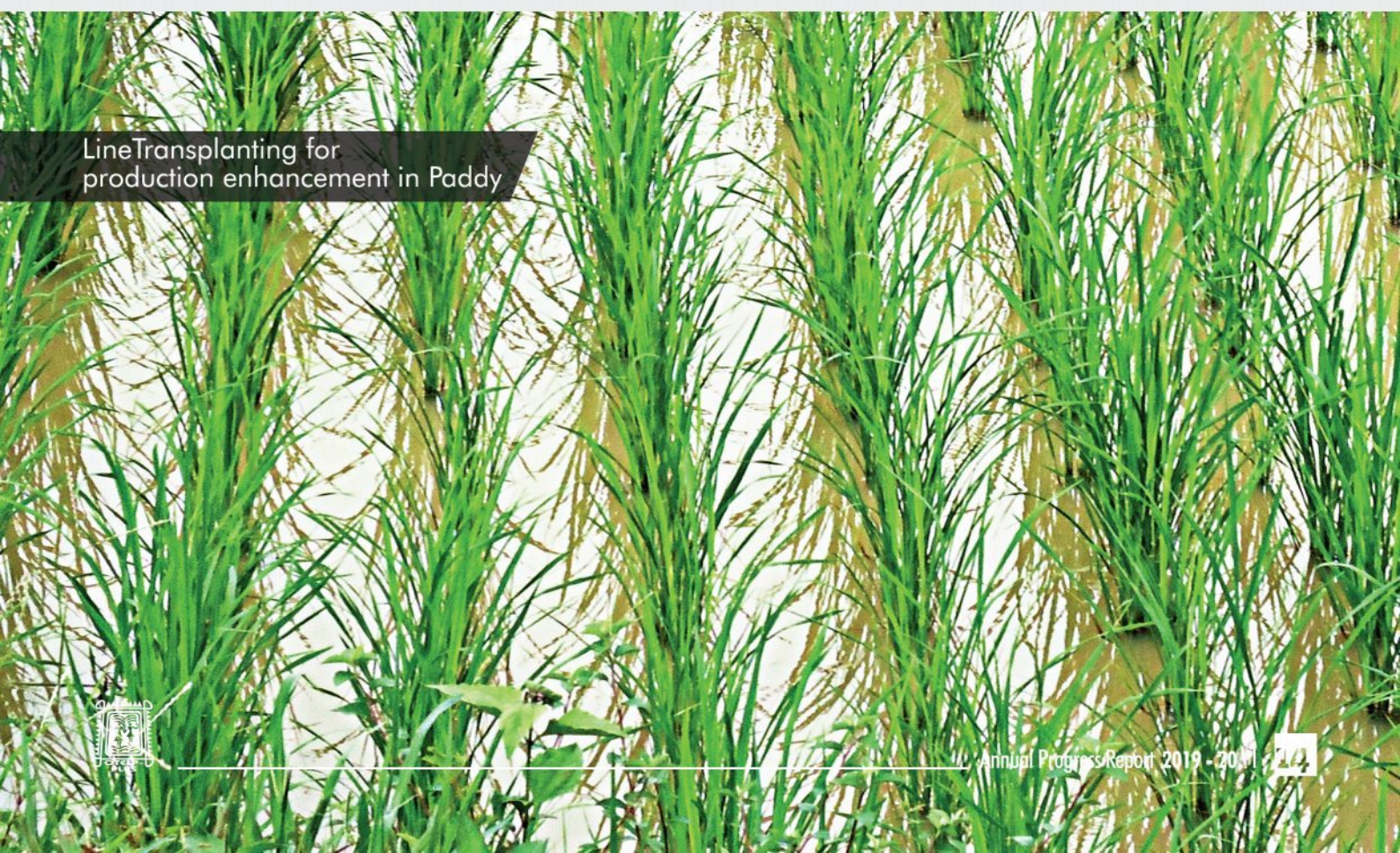
Community capacity-building on an individual level requires the development of conditions that allow an individual participant to build and enhance knowledge and skills. It also calls for the establishment of conditions that will allow individuals to engage in the "process of learning and adapting to change".

## 2. Institutional level

Community capacity building on an institutional level should involve aiding institutions at village level. Sometimes it includes creation of new institutions (if necessary) and supporting them in forming sound policies, organizational structures and effective methods of management and resource control.



SHG managed Rice Haller Unit  
Supported under SCA to TSS  
at village- Kulanga, ITDA Keonjhar



Line Transplanting for  
production enhancement in Paddy





Staggered trench under MGNREGS, ITDA Koraput



Support to SHG Members for Vegetable cultivation at juba , Mohona , OTELP Plus Paralakhemundi



Support to SHG for Goatery at Dengeli mohana under - State Fund OTELP Plus Paralakhemundi, Gajapati

## 2.2 Livelihoods enhancement

### 1. Land & Water Management:

The tribals have a long and rich experience of traditional land and management practices which are also environmentally sound. Blending these enriched indigenous land and water management practices with few adaptable modern technologies; attempts have been made to move from traditional soil and water conservation approach to integrated natural resource management approach focusing on production system enhancement on sustainable basis. The details are as follows;

### 2. Agriculture & Horticulture Development

The programme has attempted to bring a paradigm shift in socio-economic development of the tribal families through community empowerment and Livelihood promotion of the tribals of OTELP Plus areas as they get more of their income from Agriculture sector. Priority has been given for technological improvement for production enhancement of agriculture, Biodiversity conservation of local varieties, up scaling of the best practices, Crop diversification, demonstration of nutrition dense crop promotion of backyard kitchen garden, practices of low monetary inputs, Informal seed production, drudgery reduction, farm machineries etc are some of the key programme interventions.

### 3. Livestock & Aquaculture Development

There is dependency on non-farm activities like poultry & goatery for supplementary income. Backyard poultry farming requiring hardly any infrastructure set-up is a potent tool for upliftment of the poorest of the poor. Small-scale poultry production through individual broiler farming also has the potential to stimulate economic growth of resource poor households. The programme provided technical and financial inputs to take up poultry, goatery & pisciculture activities in integrated manner.



Creation of drinking water sources at village-Alanapada under D.I.F, ITDA Keonjhar



**Name - Rabati Raita Turmeric Cultivation**  
at Bausakata, Scheme -SCA-TSS OTELP Plus Paralakhemundi Gajapati



**Promotion of Scented Rice cultivation (Variety: Pimpudibasa) under B.D.C, RKVY at village-Bilapagha, Jashipur, ITDA Karanjia**



## 2.3 Development Initiative Funds (DIF)

The Community Infrastructure Fund (C.I.F) & Development Infrastructure Fund (DIF) is meant to finance community infrastructure needs identified by the community. The principal aim is to fill critical gaps for small and remote communities which may not be covered in near future under other mainstream rural infrastructure development programme as available funds are allocated first to communities with higher population. The priority area under this component are-

- (i) improving the linkages to market for those communities which are producing significant surplus, particularly during the monsoon season
- (ii) reducing the workload of women by ensuring supply of safe drinking water close to the habitations
- iii) Support to vulnerable families for economic upliftment.



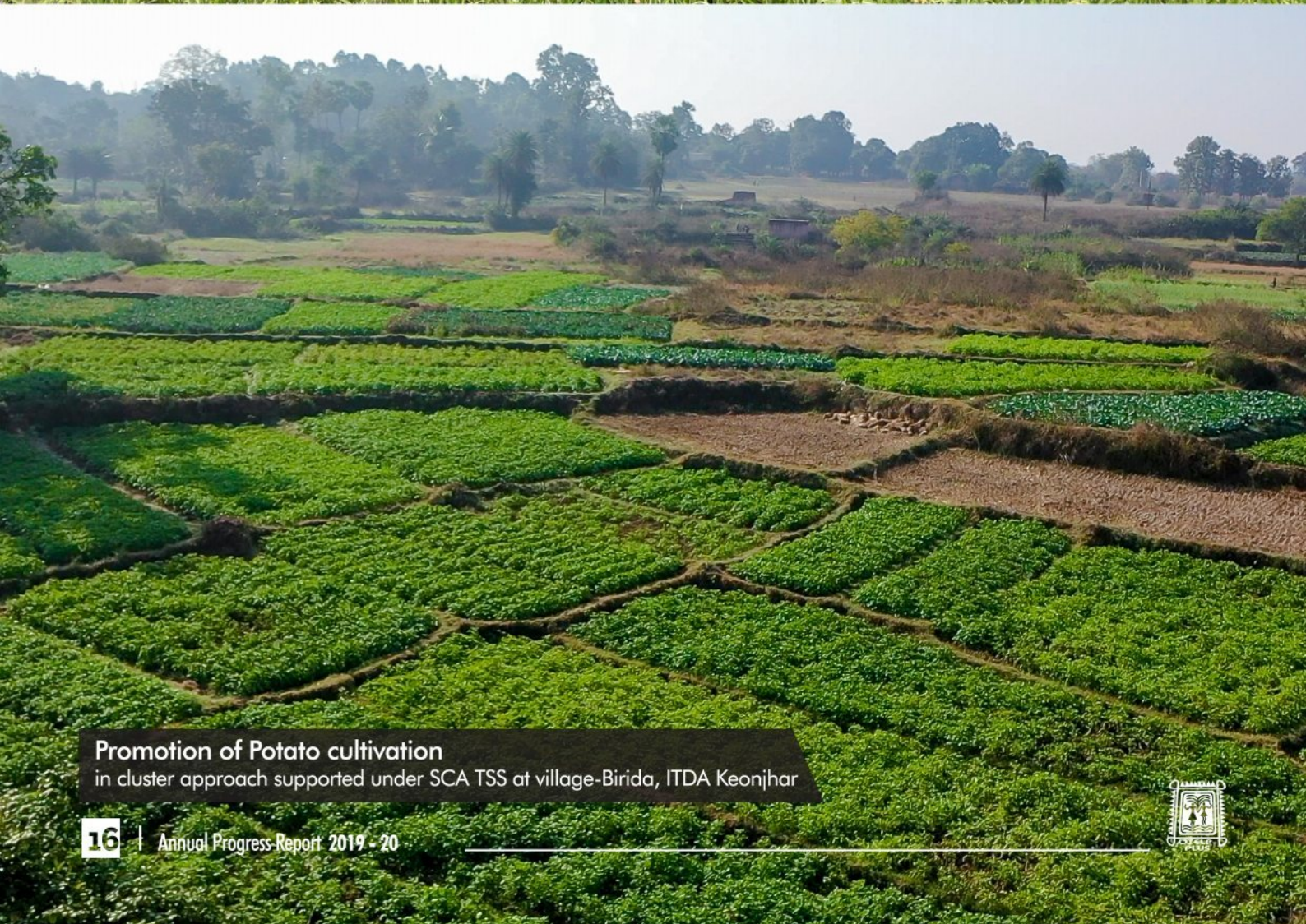
Support to Farmers for multi purpose Dug Well under MGNREGS, ITDA Koraput

Chief Administrator, KBK visited to Village-Jamokoliguda , Block-Dasmantpur under OTELP Plus ITDA Koraput





Ragi Cultivation under RKVY to address the nutritional security for the tribal people



Promotion of Potato cultivation in cluster approach supported under SCA TSS at village-Birida, ITDA Keonjhar





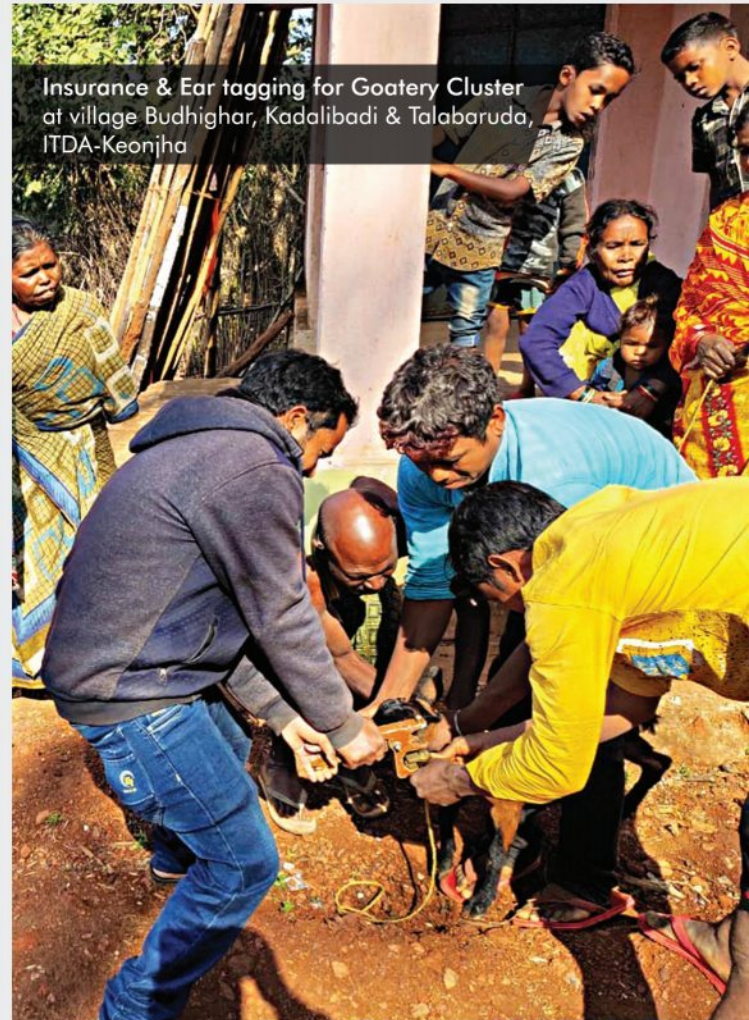
## 2.4 Programme Management

### Monitoring & Evaluation

Monitoring & Evaluation system plays important role in impacting on livelihoods in the lives of targeted community. It has developed means and ways to monitor its activities in regular interval through various agencies at different level. This method also ensures the involvement of community at their disposal. The tools and techniques used for it are given below:

Maintenance of Books of account for Community Based Organization  
(SHG/VDC/Federation/Cooperative)

- ✓ A standardized set of books/registers are developed and maintained to keep each and every record. This includes a set of books meant for accounting purposes and other set is for minute's i.e. the discussion of the organization to be recorded along with decision taken.
- ✓ This gives very good transparent records and built the confidence among all stakeholders.
- ✓ This helps in tracking success or failure and built upon from there.



Ragi cultivation @ village-Dangapani supported under RKVY, ITDA Karanjia





Support to Farmers for river lift irrigation project under Jananidhi-II in convergence with O.A.I.C and SCA TSS at village-Pandraguda, Khairput block, ITDA Malkangiri



Lemon Grass Cultivation at Jhaliamara Village of Suliapada Block under OTELP Plus ITDA Karanjia



## CHAPTER 3

# Yearwise Financial Progress

### Year wise Budget Vs. Expenditure

Financial Year	AWPB	Expenditure (Rs. in Lakhs)
2011-12	41.98	584.59
2012-13	2339.00	986.91
2013-14	6617.39	2,299.95
2014-15	6045.11	4830.71
2015-16	8521.07	4816.63
2016-17	5400.49	3511.42
2017-18	12,399.01	11,466.48
2018-19	9583.69	6554.07
2019-20	9451.05	7045.32



SL. NO.	COMPONENT	AWPB 2019-20	
		Target	Achievement
01	Capacity Building for Empowerment	456.11	321.49
02	Livelihood Enhancement	6538.18	4656.88
03	Development Initiative Fund	825.93	867.25
04	Programme Management	1210.32	949.49
05	VDC admin. cost	420.51	250.21
<b>TOTAL</b>		<b>9451.05</b>	<b>7045.32</b>
<b>SCHEME/PROGRAMME</b>			
01	Convergence	6974.05	5287.47
02	State Plan	2477.00	1757.85
<b>TOTAL</b>		<b>9451.05</b>	<b>7045.32</b>



**Paddy cultivation**  
at Purunasahi village, ITDA Paralakhemundi under RKVY



**Brinjal cultivation supported under SCA TSS**  
at village-Gainjore, ITDA Panposh



**Support to farmers for hybrid vegetable cultivation**  
at village-Bena, Telkoi, ITDA Keonjhar supported under SCA TSS



### 3.1 ITDA wise Target vs. Achievement, Year 2019-20

#### Annual Work Plan Budget - AWPB-2019-20

SL. NO.	NAME OF THE ITDA	BUDGET			ACHIEVEMENTS			
		State Plan	Conver- gence	TOTAL	State Plan	Conver- gence	TOTAL	% of Achievement
01	Balliguda	126.71	976.89	1,103.59	51.96	480.46	532.42	48.24
02	Koraput	154.62	1,328.28	1,482.90	124.75	885.64	1,010.39	68.14
03	Paralakhemundi	109.27	567.70	676.97	93.50	533.64	627.13	92.64
04	Th.Rampur	79.32	371.34	450.66	58.89	309.19	368.07	81.67
05	Gunupur	297.67	1,132.53	1,430.20	212.93	757.14	970.07	67.83
06	Malkangiri	104.74	936.29	1,041.03	94.20	909.45	1,003.65	96.41
07	Nawarangpur	110.19	559.55	669.74	98.58	390.25	488.83	72.99
08	Keonjhar (closed unit)	154.42	310.02	464.44	107.12	394.20	501.33	107.94
09	Karanjia	180.16	362.00	542.16	119.89	321.93	441.83	81.49
10	Panposh	192.42	163.95	356.37	115.22	137.21	252.43	70.83
11	Keonjhar (Telkoi) (New unit)	180.30	84.00	264.30	130.29	80.94	211.24	79.92
12	Champua	218.05	78.50	296.55	130.66	49.39	180.05	60.71
13	Kuchinda	178.43	103.00	281.43	72.74	2.52	75.26	26.74
14	PSU	390.72	—	390.72	347.11	—	347.11	88.84
<b>GRAND TOTAL</b>		<b>2,477.00</b>	<b>6,974.05</b>	<b>9,451.05</b>	<b>1,757.85</b>	<b>5,251.96</b>	<b>7,009.81</b>	<b>74.17</b>



Pulses cultivation under rKVV  
at village Siyalilata, ITDA Paralakhemundi



Okra cultivation under SCA - TSS, ITDA Malkangiri



Support for Smokeless Chullah under D.I.F, ITDA Keonjhar



Lemongrass cultivation under MGNREGS, under ITDA Keonjhar

Name - Jayab Gomongo Turmeric Cultivation at Tai, Scheme -SCA - TSS, R.Udayagiri OTELP Plus Paralakhemundi, Gajapati



## CHAPTER 4

# Major Activities & Achievements

The programme is closed in 8 ITDAs wherein the programme Expenditure is 6450.26 Lakhs & in Convergence are 21665.43 Lakhs. The detail expenditure is attached in the below table.

EXPENDITURE - OTELP PLUS – ITDAs (Closed Units)					(In Lakhs)			
Sl.No	District	ITDA	From	To	Expenditure			MWS
					Programme Exp	Convergence	Total	
1	Mayurbhanj	Karanjia	2013-14	2019-20	833.4	2188.27	3021.67	59
2	Keonjhar	Keonjhar	2013-14	2019-20	1029.44	2962.66	3992.1	53
3	Koraput	Koraput	2011-12	2017-18	874.72	3214.1	4088.82	102
4	Malkangiri	Malkangiri	2011-12	2017-18	1479.3	2350.97	3830.27	102
5	Nabarangpur	Nabarangpur	2011-12	2017-18	406.99	2778.59	3185.58	50
6	Balliguda	Kandhamal	2012-13	2018-19	693.18	4088.85	4782.03	51
7	Th.Rampur	Kalahandi	2012-13	2018-19	312.29	1489.47	1801.76	38
8	Gajapati	Paralakhemundi	2011-12	2017-18	820.94	2592.52	3413.46	80
<b>TOTAL</b>					<b>6450.26</b>	<b>21665.43</b>	<b>28115.69</b>	<b>535</b>

## Major Achievements

- ✓ Total Mandays generated in the year 2019-20 under MGNREGS: **12.36 Lakhs**
- ✓ Total expenditure under MGNREGS: **Rs. 31.12 Cr.**
- ✓ In the year 2019-20, 1,91,701 no. of **beneficiaries** (Tribal SHG members, Farmers, vulnerable household) are covered under various income generation activities like agriculture, horticulture, livestock, livelihood MGNREGS etc. SCA TSS, RKVY, P.M.A.Y, K.V.K, C.H.E.S and Horticulture Department etc.
- ✓ In the year 2019-20, 22338 Quintal of agri-horti produces harvested covering 1060 ha. Of land in OTELP Plus areas with support from SCA TSS and RKVY, state plan.
- ✓ In the year 2019-20, 28 VDVKs has been formed in OTELP Plus programme areas covering 511 SHGs.







Power tiller distribution to Farmers for drudgery reduction and custom hiring supported under State Plan, ITDA Gunupur



Support to SHG for Mustard Cultivation under RKVY, ITDA Keonjhar



# Major Activities & Achievements

## 4.1 ITDA wise progress under MGNREGS

Sl No	Name of ITDA	TS FS Santioned (Rupees in Lakhs)			Achievement (Rupees in Lakhs)			Mandays Generated in LWM & Plantation		
		LW & M	Plantation	Total	LW & M	Plantation	Total	Person created	Women created	Total
1	Paralakhemundi	461.16	360.27	821.43	263.18	132.84	396.02	105718	48407	154125
2	Gunupur	760.60	361.23	1,121.83	330.54	138.66	469.20	166846	97944	264790
3	Nawarangpur	190.00	360.30	550.30	192.39	187.13	379.52	84787	36336	121123
4	Th.Rampur	41.99	99.54	141.53	21.40	53.19	74.59	19451	9958	29409
5	Karanja	257.65	186.83	444.48	69.04	123.00	192.04	68177	13368	81545
6	Malkangiri	667.50	104.07	771.57	376.84	63.15	439.99	101994	67998	169992
7	Keonjhar	164.14	121.99	286.13	262.83	60.01	322.84	55652	72186	127838
8	Balliguda	962.11	305.06	1,267.17	307.09	112.47	419.56	75646	41532	117178
9	Koraput	189.90	133.00	322.90	282.68	136.19	418.87	107644	62746	170390
<b>Grand Total</b>		<b>3,775.87</b>	<b>2,068.90</b>	<b>5,844.77</b>	<b>2,105.99</b>	<b>1,006.64</b>	<b>3,112.63</b>	<b>785915</b>	<b>450475</b>	<b>1236390</b>

Awariness campaign on social taboos at Badamohuldiha village of Thakurmunda block





Broccoli cultivation under RKVY at village R.Udayagiri under RKVY ITDA Paralakhemundi



Cauli flower cultivation at Mathili, under SCA - TSS, ITDA Malkangiri



Brinjal cultivation by SHG members at Kartanpali, ITDA Malkangiri



## 4.2 Information on Horticultural Produces, Crops & Cereals produced in the year 2019-20

Sl No	Agri-Horti produces	Area covered (in Ha.)	No. of Farmers Benefitted
1	Potato	24	64
2	Sun flower	62	191
3	Mustard	144	565
4	Chilli	36.5	301
5	Ragi	90	428
6	Tomato	154	507
7	Onion	155	727
8	Turmeric	55	431
9	YAM	32	243
10	Brocoli	5	70
11	Capsicum	5	45
12	Sesamum	30	80
13	Coriander	15	32
14	Lemongrass	45	122
15	Arhar	5	20
16	Ground nut	59.2	202
17	Cauli flower	18	45
18	Brinjal	26	97
19	Sweet Corn	8	20
20	Pumpkin	1	14
21	Black rice	6	47
22	Scented rice	5	39
23	Water melon	6	14
24	Carrot	1.5	15
25	Cabbage	10	30
26	Ginger	32	340
27	Banana	30	68
<b>TOTAL</b>		<b>1060.2</b>	<b>4757</b>





Support to Farmers for promotion of green chilly cultivation at village-, ITDA Panposh supported under SCA TSS



Community nursery at Merdikupa, Lanjigarh under RKVY, ITDA Th. Tampur



### 4.3 ITDA wise market linkages & buy back arrangements of various produces

#	ITDA	SHG/Farmer Name	Village	Minor Forest Produce/ Items	Quantity ( in K.G)	Rate/k.g
1	Malkangiri	Maa Sarswati SHG	Kiang	Deseeded Tamarind	10	
2		Sahid Laxman Nayak	Kiang	Deseeded Tamarind	80 k.g (@Rs.110/ k.g)	110
3		Maa DanteswariSHG	Luler	Wild honey	50 k.g (@Rs.220/ k.g)	220
4		Maa Mangala	Luler	Tamarind	10	130
5		Jay Sri Ganesh SHG	Kopra	Green dry mango	40 K.G ( @Rs. 100 /k.g)	100
6		Maa Laxmi SHG	Luler	Wild honey	10	170
7		Maa Gramadevi producer group	Kopra	Siali leaf plate	30	
8		Maa Ladrimata SHG	Bara	Tamarind		30
9		Maa Laxmi SHG	Tanginigu- da	Tamarind	10	30
10	Balliguda	Padmalaya SHG	Gumadi	Deseeded Tamarind	200 Quintal	110
11	Paralakhemundi	Alok Mission		Ragi	5 Q	@Rs.29.50 /k.g
12		Gajalaxmi SHG			12 Q	
13		Bhairabi SHG			6 Q	
14		Parvati SHG		Khajurguda	2 Q	@Rs.60 /k.g
15	Koraput	Thakurani SHG		Tamarind	150 k.g	\@Rs.30 /k.g
				Face masks		
		Jhankar SHG		Tamarind	200 k.g	
		Siba SHG		Tamarind	100 k.g	
		Suna muhi SHG		Tamarind	150 k.g	
		Maa Satavaruni SHG		Tamarind	100 k.g	
		Udayana SHG		Tamarind	200 k.g	
		Omm namasivaya SHG		Tamarind	200 k.g	
		Jhankar Devi SHG		Tamarind	100 k.g	
16	Karanja	Maa Shanti SHG	Kumari	Wild honey	50 k.g'	\@Rs.170/k.g
		Gangamaya SHG	Jhaliamara	Lemon grass oil	20 Litre	\@Rs.1000
17	Panposh	Trinath SHG		Face masks	500	Rs.50 per mask

**N.B : 26 SHGs are linked with TDCC for buy back of different products**



Coriander cultivation at village karkuli, Lanjigarh under RKVY, Th Rampur



Corriender and chilli bed at Sudung under RKVY support FNGO PRAKALPA



Support to Farmers for promotion of Carrot Cultivation under R.K.V.Y, ITDA Nabarangpur

## 4.4 ITDA wise Mandays Generated during last 5 years under MGNREGS

SL	ITDA	Total Man days Generated	Female Mandays Generated	Male Mandays Generated
1	Keonjhar	487621	229807	257814
2	Nawarangpur	266442	67931	198511
3	Koraput	342198	132927	209271
4	Malkangiri	202403	91940	110463
5	Th.Rampur	142441	44215	98226
6	Gunupur	409998	151678	258320
7	Karanja	189539	45893	143646
8	Balliguda	1259316	468785	790531
9	Paralakhemundi	538062	161419	376643
<b>Total</b>		<b>38,38,020</b>	<b>13,94,595</b>	<b>24,43,425</b>





Dug well for Farmers at Raikia in convergence with MGNREGS, ITDA Balliguda



Support to SHGs for promotion of village nutrition garden, village-Khadaput, ITDA Koraput supported under State Plan



Training on Disease management on Poultry at Dhadipani village, ITDA Karanjia



# CHAPTER 5

## Innovations & Critical Challenges

### 5.1 Entry Point Activities (E.P.A)

In order to address critical gaps related to infrastructure in tribal region, a special activity with the branding of '**ENTRY POINT ACTIVITY**' (E.P.A) has been taken up in ITDA Kuchinda, Champua, Panposh, Gunupur & Telkoi block in Keonjhar district during year 2018-19 & 2019-20. Under E.P.A, 621 no. of low cost infrastructure projects has been completed like construction of drinking water projects, tube-well platforms, soak pits, changing rooms, bathing ghats for community, drying yards, renovation of water tanks, installation of solar street lighting in remote pockets etc. Here are the ITDA wise E.P.A activities.

ITDA	No. of projects completed	No. of villages Benefitted	Works taken up
Gunupur	25	13	Construction of Drying yards, renovation of water bodies, installation of solar based street lighting, construction of bathing ghats, changing rooms, village drains, tube well platforms, soak pits.
Champua	69	69	
Keonjhar	83	50	
Panposh	387	74	
Kuchinda	57	50	
<b>Total</b>	<b>621</b>	<b>256</b>	

### 5.2 Promotion of Van Dhan

#### Vikas Kendra under Pradhan Mantri Van Dhan Yojna (PMVDY)

In convergence with VDVKs, a scheme under Ministry of Tribal Affairs (MoTA), 28 Van Dhan Vikash Kendras (VDVKs) have been formed through TDCOL covering 51 SHGs in OTELP Plus programme areas . These VDVKs will be provided financial assistance @Rs.15 lakh per VDVK which will help the SHGs for Marketing of Minor Forest Produce (MFP) through Minimum Support Price (MSP) & Development of Value Chain.





Promotion of Ragi cultivation supported under RKVY, village-Putruguda, ITDA Gunupur



Community Farm pond under MGNREGS, at Amjhari, Lanjigarh ITDA Th. Rampur



## 5.3 GOAL

### (Going Online As Leaders):

GOAL (Going Online As Leaders) is the flagship program of Facebook and Ministry of Tribal Affairs, designed to empower tribal youth through mentorship, leadership training, and digital literacy skills. The purpose behind GOAL is to not only increase the number of tribal-owned businesses in India, but also create role models within the tribal community, who can further serve as an inspiration and help the tribal youth explore, learn, and grow. After all, knowledge builds confidence that transforms us to become agents of justice and break down barriers into opportunities. The programme was basically meant for Scheduled Tribe Youth.

### Features of the Programme:

1. Under the banner, Facebook will mentor 5000 Tribal Youths through 2500 expert mentors who will be leaders from Industry, Arts, Politics and Business etc.
2. The selected mentees will be provided with a Smart Phone and online Connectivity and "GOAL" Kit with necessary study material by MoTA.
3. The programme will be of 9 months duration, where weekly sessions will be held for first 7 months and internship for last 2 months.

The programme was implemented in OTELP Plus programme areas as a special campaign through ITDAs and FNGO facilitations. The status of enrollment under GOAL is tabled below.

### Status of Enrollment of Mentors and Mentees in OTELP Plus programme areas

Name of the ITDA	Total no of mentees enrolled	Total no of mentors enrolled
Kuchinda	183	30
Panposh	254	15
Koraput	114	9
Paralakhemundi	54	18
Malkangiri	185	2
Champua	162	15
Nabarangpur	19	12
Keonjhar	151	4
Baliguda	8	3
Gunupur	32	27
Th.Rampur	76	7
<b>Total</b>	<b>1238</b>	<b>142</b>





Income generation training on goatery poultry at Jamtolia village, ITDA Karanjia



Participation of Malkangiri unit at District level cultural event



Human Health Camp at village Nashakati, ITDA Karanjia



## **Rastriya Krushi Vikash Yojana (RKVY) 2018-19 & 2019-20**

A special project with the nomenclature of 'Promotion of sustainable livelihood options for the tribal households of OTELP Plus programme areas through field based cropping' was implemented during 2018-19 under RKVY with the project cost of Rs. 7,79,91,820. The Programme was implemented through OTELP Plus programme in public private community partnership (PPCP) mode in tribal areas of Koraput, Gajapati, Kandhamal, Kalahandi, Nabarangpur, Malkangiri, Rayagada, Keonjhar & Mayurbhanj districts.

The project was funded by Rastriya Krushi Vikash Yojana (RKVY) with a financial support of Rs.6,00,19,000.00 and Rs.1,79,72,820.00 as farmers support/ contribution.

### **The objective of the programme :**

Holistic tribal development through sustainable enhancement of livelihoods and community empowerment. The special features are bottom up planning, execution and monitoring by community facilitated by NGO at field level and responsive staff of ITDAs at district level and with strong monitoring mechanism at state level (PSU). The programme was implemented in 998 micro watersheds with a treatment area of 5.21 lakh ha.keeping following objectives in mind.

✓ Conservation of traditional crop like paddy, local ragi/ millets, local pulses on a systematic manner.

✓ Enhancing production and productivity of cereals, pulses, oil seeds, vegetables, tuber crop and spices crop by introducing new varieties, better use of agro inputs and dissemination of technology.

✓ Achieving food and nutrition security both households and community level especially most vulnerable tribes, women and children.

✓ Diversification and cropping system thereby increase their income.

✓ Skill up gradation through capacity building.

✓ Improve overall quality of life by increase of net profit from the value added crops.



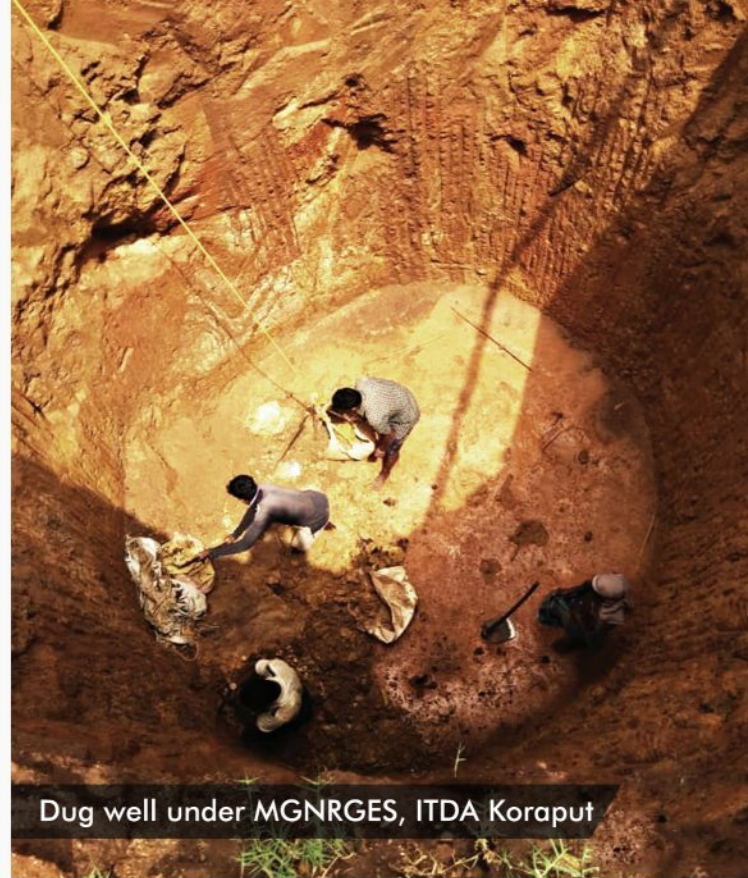


Community participation & Participatory Rural Appraisal exercise by the community, ITDA Kuchinda

Powered by N



Mango plantation with intercropping of greenpea at village Ratakhandi, ITDA Balliguda



Dug well under MGNREGS, ITDA Koraput

### The key activities undertaken are :

1. Biodiversity Conservation of Traditional Crops (Paddy and Ragi/ Millets).
2. Replication & Up Scaling of Best Practices (tuber crops, spices, off season vegetables).
3. Crop Demonstration for Poorest of the Poor .
4. Capacity Building and Exposure Visit.

The details of field activities undertaken during 2018-19 & 2019-20 are as follows:

Sl No.	Field Activities	HHs/ Farmers covered (nos.)	Area covered in Ha.
1	Biodiversity Conservation of Traditional Crops (Paddy, Ragi, Lesser Millet, Pulses)	1990	209
2	Upscaling & Replication of Best Practices (Ragi, Niger, Yam, Termeric, Vegetables, Onion, Brinjal, Tomato)	26800	374.5
3	Crop Demonstration for poorest of the poor (Paddy, Ragi)	3000	670
4	Training of Farmers	4050	
5	Exposure Visit of Farmers	520	
<b>TOTAL</b>		<b>36360</b>	<b>1253.5</b>

Water absorption Trench work under MGNREGS at Tetragoon, ITDA Baliguda







Mustard cultivation by beneficiaries  
† village-Beredakia, ITDA Balliguda



Onion & mustard cultivation  
under RKVY, ITDA Baliguda



Monthly review-cum-coordination meeting  
with CSPs of Daringbadi Cluster, ITDA Baliguda

# CHAPTER 6

## Road Map for the Year 2020-21

### Component/Scheme wise Annual Work Plan & Budget 2020-21

Sl. No.	Component	Budget (Rs. In lakhs)
1	Capacity Building for Empowerment	292.52
2	Livelihood Enhancement	3229.61
3	Development Initiative Fund	527.64
4	Programme Management	1090.93
5	VDC admin. cost	427.48
	<b>TOTAL</b>	<b>5568.17</b>
<b>Scheme wise</b>		
1	Convergence	3,118.12
2	State Plan	2,450.05
	<b>TOTAL</b>	<b>5,568.17</b>

### ITDA wise Annual Work Plan & Budget 2020-21

Sl. No.	Name of the ITDA	Budget (Rs. In lakhs)		
		State Plan	Convergence	TOTAL
1	Balliguda	82.65	129.29	211.94
2	Koraput	109.41	361.28	470.69
3	Paralakhemundi	93.42	130.00	223.42
4	Th.Rampur	75.46	217.53	292.99
5	Gunupur	458.19	570.30	1,028.49
6	Malkangiri	115.44	347.43	462.87
7	Nawarangpur	85.79	316.31	402.10
8	Panposh	243.68	249.26	492.94
9	Keonjhar(Telkoi)	226.48	234.49	460.97
10	Champua	250.82	303.79	554.61
11	Kuchinda	263.33	258.44	521.77
12	PSU	445.40	-	445.40
	<b>GRAND TOTAL</b>	<b>2,450.05</b>	<b>3,118.12</b>	<b>5,568.17</b>





Onion cultivation at Santi VDC of DASMANTPUR Block under RKVY, ITDA Koraput



Onion seedling Planting at Kaleketa of Koijhar GP, ITDA Baliguda



Onion and Broccoli cultivation at village Hirikama, ITDA Paralakhemundi



## 7.1 Information on SHGs promoted in OTELP Plus ITDAs

Sl. No.	ITDA	Block	VDC	SHG	Fund available with SHG (Rs. In lakhs)
1	Balliguda	3	30	389	84.52
2	Gajapati	2	20	180	37.5
3	Nabarangpur	3	29	573	107.29
4	Malkangiri	4	30	309	49.99
5	Koraput	4	40	364	103.19
6	Gunupur (N+O)	7	227	1570	212.37
7	Th.Rampur	2	22	207	19.78
8	Champua	3	100	678	188.97
9	Keonjhar	1	84	645	92.25
10	Panposh	2	80	907	122.91
11	Kuchinda	3	119	341	NA
<b>TOTAL</b>		<b>34</b>	<b>781</b>	<b>6163</b>	<b>1018.77</b>

## 7.2 Proposed plan under SCA-TSS, 2020-21

Sl. No.	ITDA	Budget (Rs. In lakhs)			Area to be covered under Farm activities (in Ha)	No. of Non-farm units	Proposed No. of Beneficiary
		Farm	Non-Farm	Total			
1	Baliguda	12.65	0.00	12.65	30	389	84.52
2	Koraput	449.425	87.925	537.35	20	180	37.5
3	Malkangiri	36	52	88.00	29	573	107.29
4	Nabarangpur	76	22	98.00	30	309	49.99
5	Th.Rampur	8.43	0	8.43	40	364	103.19
6	Paralakhemundi	124.74	0	124.74	227	1570	212.37
7	Keonjhar	29	0	29.00	22	207	19.78
8	Gunupur	63.87	0	63.87	100	678	188.97
9	Kuchinda	40	24.55	64.55	84	645	92.25
10	Champua	15.46	8.92	24.38	80	907	122.91
11	Panposh	65.6	80	145.60	119	341	NA
<b>TOTAL</b>		<b>921.18</b>	<b>275.40</b>	<b>1196.57</b>	<b>781</b>	<b>6163</b>	<b>1018.77</b>





SCT at village juba inder MGNREGS  
ITDA paralakhemundi, Gajapati



Vegetable seed kits distribution by P.A, ITDA  
Paralakhemundi for kitchen gardening.

# CHAPTER 7

## Success Stories - 01

### Dugwell:

#### A Game changer for small and marginal farmers (ITDA Koraput)

Madhaba Muduli, a tribal small land holder from P-Sujuli village in Nandigam Gram Panchayat. With the hand holding support & technical expertise provided by OTELP PLUS Koraput team, Madhaba Muduli along with his fellow villager and a close knit person named Chittam Paraja went for digging a dugwell with support from MGNREGS scheme for better irrigation. The width of dugwell is 17'5" & depth 25'0" , estimate cost Rs.1,38,500.00/-. He proved that his small piece of farm land with simple minor irrigation support could ensure sustained income for his family & set an example for others in that village.

All his life he mostly depended on agriculture for his livelihood. He has faced a lot of problem in accessing drinking water & irrigation due to shortage of water. During summer they have to walk around 3km to collect drinking water from a nearby forest spring & during that he suffered many hardships.

By digging a dug well, Madhab and Chittam could irrigate their land of approximately 5 acres & improve their cultivation & drinking water too. With the expert advice, they applied cow dung for the revival of the nutrition of the soil and took measures for preserving the soil erosion & made the soil suitable for other crops as well. Last winter brought good yield of vegetables in his farm like beans, cauliflower, tomato, zinger & eggplant etc., which made them earn around Rs. 28000.00/- in two phase. Now this dug well has become one of their permanent assets and they looks forward for cultivating seasonal vegetables.

Now Madhab and Chittam have set an example for P-Sujuli village as a good farmer. This endeavor has changed his life for good. Following this, his lifestyle has changed, he is able to manage day to day requirement and his children are getting proper education.





Glimpses of virtual review meetings held under the chairpersonship of Principal Secretary & Programme Director



Glimpses of virtual review meetings held under the chairpersonship of Principal Secretary & Programme Director

# Success Stories - 02

## Potato Cultivation:

A trend Setter for **small and Marginal Farmers** (ITDA Keonjhar)

Agriculture is a best source of sustainable livelihood in India and its states like Odisha, where most of people depend on Agricultural outcomes for their livelihood. In Odisha there are various communities, castes. Keonjhar District is one among the 13 tribal dominated Districts of the state. In ITDA Keonjhar, OTELP Plus was introduced in the year 2013 in 2 blocks namely Bansapal and Harichandanpur. In 2019, another block namely Telkoi added. Telkoi block is full of natural resources such as forest and agri lands. Besides, there are also many barren lands in the block. Purunapani, a small village of Telkoi block, located at a distance of 10 k.m from block H.Q consisting of 45 Bhuyan Households. Most of the people depend upon forest products whereas others are doing paddy cultivation in kharif for their livelihood. There are some lands on the edge of Dandahuli dam. Only four families are doing vegetable cultivation for their own usefulness but they never think about commercial agriculture.

In the mean while, OTELP Plus team came to the village and encourage them to adopt commercial crops. Some of the women farmers agreed to start Potato cultivation in a patch of 3 acres land. In the first phase, 18 Q. of potato seeds with training on farming methodology were provided to the farmers. The Agriculture Experts of OTELP Plus extended hand holding support to the farmers and put a close watch on the farm field for timely harvesting of the crop. However, it was not so easy to change the mindset of the farmers to go for commercial crops for the first time. Due to heavy rain, the potato plant started to droop and fungus attacked. However, with the timely advice of Agriculture Experts, the potato field revived and started growing. As a result at the end of December 2019 they get noticeable outcome from the potato cultivation. They get yield of 92.30 Q. potatoes. The list of farmers along with the yielding details is given below.

Sl no	Name of the Farmers	Area (in Acres)	Production (in Quintals)	Own Consumption (in Quintals)	Quantity (in Quintals)	Amount (in rupees)
01	Jai Dehury	0.50	16.00	1.00	15.00	18000
02	Jatri Dehury	0.50	15.50	1.00	14.50	17400
03	Pari Dehury	0.50	14.80	1.00	13.80	16560
04	Machhuani Dehury	0.50	16.00	1.00	15.00	18000
05	Kirtini Dehury	0.50	15.00	1.00	14.00	16800
06	Narahari Dehury	0.50	15.00	1.00	14.00	16800
<b>TOTAL</b>		<b>3 Acres</b>	<b>92.30Q.</b>	<b>6Q.</b>	<b>86.30Q.</b>	<b>1,03,560</b>

This is the way, how women farmers proof their capabilities and open new path towards the development. One of the above farmer Jatri dehury expresses her happiness that she can earn more than

Rs.20,000 from her land which not only boost their confidence but also encouraged other fellow farmers to adopt potato cultivation as well.







Stone bonding at Dhanabada of sialilati Gp,R.udayagiri block, estimated cost 4.16lakhs,1208md, OTELP plus ITDA paralakhemundi Gajapati



Sunflower cultivation at mohana under SCA TO TSP



SHG group meeting at village Dhakorasi, ITDA Malkangiri



# Success Stories - 03

## Lemmon Grass Cultivation:

### A Magic Intervention (ITDA Koraput)

Lemongrass is a relatively new crop for farming in the hinterlands of Odisha. Slowly and steadily People are getting educated on the benefits of Lemon grass cultivation in the interiors. With time, farmers have learnt that lemon grass is a crop which could be procured three times a year in the given weather condition here in Koraput district. The secrets and lucrative fact about lemon grass cultivation is with low maintenance and less cost it gives high returns is now very much out there for people to witness. Although the market is unorganized, the charm of Lemon Grass lies in its potential for better income and poverty reduction. This has drawn the attention of CBOs, CSOs and people interested in the livelihood sector to be more invested in. Hence, the crop has got more attention in recent times and the cultivation is spreading too.

One such case can be seen in Podeiput village of Gadiaguda, Dasamantpur Block. With the intervention of OTELP Plus Koraput unit in the year 2019-20, some ten ST households cultivated lemon grass in 10 ha of land in a cluster patch. Farmers are now interested more in lemon grass cultivation and earn money through the convergence program under MGNREGA. Till now 5934 mandates has got the sanctions through ITDA. Each farmer can earn eighty to ninety thousand per acre annually.

For the 1st round of crop cutting, the expenditure for the above said each household was 8500, the turnover expected is Rs.37,500 with the clear-cut profit of Rs. 29,000/-. In the second crop cutting time by spending Rs.6500 they earned Rs. 43,750/-with a profit of 37,250 each. Similarly, in the third crop cutting season, by spending Rs. 5,300, each of them can earn Rs. 46,875 with a profit of Rs.41,575.

Regarding this, a Word of mouth on the income and profit spread among villages resulting in more people taking interest in cultivating the same. Now, the community started to negotiate and demand the price depending upon the seasonal quality. This influenced streamlining value chain of lemon grass tightening almost all the possible leakages.

By ensuring the timely interventions & streamlining the selling price, the Lemon grass market is now being standardized by as per the open market rate which in turn helps in empowering farmers and increased their bargaining skills with the traders over and above the market price. The institutional interventions organized and the community and encouraged them for community farming, emphasizing on the POP of the crop for better and enhanced production. It conducted various awareness programs on marketing processes and strategies to capacitate community by enhancing their knowledge level.





Training on Disease management in Goatery, at Gundula, ITDA Keonjhar



Training on FAQ and pre harvesting of agri produces, ITDA Balliguda



Signing of MoU by PA ITDA Gunupur with FNGOs at ITDA Gunupur



# Success Stories - 04

## Sunflower Cultivation :

### A Paradigm Shift (ITDA, Gunupur)

The sunflower, *Helianthus annuus* belongs to the family *compositae*. The genus name *helianthus* is derived from Greek word *helios* "sun" and *anthos* "flower", locally known as *Surajmukhi/Suryamukhi*. The sunflower has a shallow root system. The Sunflowers usually grows up to 1 to 3 meter height. Sunflower is a cash crop and its harvest period is more than three months. Now major farmers are interested for sunflower cultivation because its income is higher than other crops in three months time. Usually sunflower is cultivated kharif and rabi season with assured irrigation in south Odisha.

Odisha Tribal Empowerment & Livelihoods Programme plus is a programme to enable the poor tribal households to ensure their sustainable livelihoods and food security through use of the natural resources and other activities through convergence with flagship programme of state and central Govt. During the rabi season 2019-20, sunflower was cultivated in Kandakuti and Patamguda villages in Gudari block through OTELP Plus ITDA Gunupur.

Kandakuti and Patamguda Villages are the tribal villages located in Gudari block of Rayagada district. It is situated under Karlaghati Gramapanchayat which are 7 kms away from Panchayat Office and 22 KM from Block headquarter, 62 Km away from OTELP Plus ITDA, Gunupur and 105 km away from district headquarter Rayagada.

Group discussions with the community was organized during the Rabi season for Cultivation of Sunflower in two villages. The villages (Kandakuti & Patamaguda) are surrounded with a perennial stream. The perennial stream is flowing in lower level of the villages with insufficient water level . So it is difficult to irrigate the crop during Rabi. All lands of the villages are Slope land with traditional free grazing after harvest of paddy crop.

After several meeting with VDC members, around 23 farmers took interest for cultivating sunflower in cluster approach during Rabi season in 35 AC of land. The Farmer prepared field and created fencing with local available material by own contribution. With the frequent interaction with the farmers and expert advise and FNGO facilitation, the intervention was successful. Procedures like line sowing, manueing, watering and timely technical guidance were followed by the Farmers





Training on line transplanting under OTELP Plus at KALPAVRIKSH, Raikia



97291  
899506  
.51m  
m  
018 09

Training on leafplate stitching at Balliguda leaf unit



Training on Goatery & poultry with presence of L.I - Balaram Nayak(Mehendragada) & LI - Rajesh Patro, (Mehendragada) under r.udayagi Block, OTELP Plus



# Success Stories - 05

## Onion Cultivation in cluster Approach:

ITDA Paralakhemundi

Onion is one of the second most important commercial crops of India next to Potato in the world. Gajapati District is a highly hilly area. The areas are mostly covered under forest. The villages Tai & Dabaraguda under OTELP Plus comes under R. Udayagiri Block & Dabaraguda Gram Panchayat, which is 45 k.m away from Block Office. Eighty percent of population are belongs to tribal community.

The villages Tai and Gadapadara are revenue villages under Dabarguda Grampanchayat. The Odisha Tribal Empowerment & Livelihoods Programme Plus (OTELP PLUS) is operational in the district since 2005. Through this programme various measures have been taken for securing livelihood and ensuring livelihood support through farm and non-farm based interventions for tribals through various Schemes and convergence. **'Livelihood Cluster Planning**, a new programme introduced by ST&SC Development Department during year 2019-20 was one of the flagship programme supported under SCA-TSS. Under this scheme, Onion Cultivation started covering 76 small and marginal farmers with an initial support of Rs. 4.00 lakhs towards supply of inputs/materials.

Village Development Committee (VDC) is the platform where all decision of the villages are being taken. Hence a meeting was being conducted for onion cultivation in the village of Tai and Gadapadara, where all VDC members decided to start Onion cultivation. In the first stage, Group discussion for onion cultivation started involving all beneficiaries under the guidance of Technical experts of ITDA Paralakhemundi .Being the implementing agency, OTELP Plus Paralakhemundi supported a sum of amount Rs. 4 lakhs as inputs cost through which hybrid seeds,

organic fertilizer, technical support, capacity building as well as Training provided to the beneficiaries.

Capacity Building of Community through need based training is one of the vital component of OTELP Plus. Keeping in view of the need of the community, training and C.B activities are being conducted at VDC level, FNGO as well as ITDA level. Regarding Onion cultivation, training programmes were provided in three phases (at the time of seed distribution & farming methodology, mid-term training and post harvesting training).





Training Programme on Credit linkage at Hatiamba village under FNGO Parivartan, Malkangiri



Training to field functionaries on Integrated Farming by P.D, OTELP Plus at IMAGE, BBSR



Training on livelihood and income generation at R.Udayagiri under ITDA PKD

# Success Stories - 06

## I change my self

### A factual story of a small entrepreneur

Rajabandha village comes under Nakamamudi GP of Korukonda Block in Malkangiri District. The village is consisting of different social categories of community like bhumia tribe, Desia Tribe, Scheduled Caste and Other Caste. Most of the households are depending upon daily wage labour as main source of livelihoods as they belong to landless. However, very few of the community members are depending upon agriculture. It is being very difficult for the landless people to manage their life & livelihoods under such crisis period of pandemic covid-19. Sri Arjun Khara living with his family of 4 members including his wife, son & only daughter is one of the landless and belongs to ultra poor category residing in Rajabandha village, who is actually displaced from Tunel camp under Chitrakunda block due to annoyance of Maoist activity. Arjun's main source of livelihood is daily wage under MGNREGS. He has ration card but unable to manage his family with the provision under the scheme.

In order to bring the tribal into the mainstream of development process, Odisha Tribal Empowerment and Livelihood Programme Plus (OTELP plus) funded by Govt. of Odisha was implemented in the village & during intervention of OTELP Plus project; it was found that Arjun needs immediate livelihood support to lead a dignified & sustainable life. Keeping view of his tragic situation, the staff members of FNGO & ITDA felt necessity of livelihood support & finalised the same during Village Development Committee (VDC) meeting. Finally, during February 2020, VDC approved Rs. 30000.00 to assist Arjun & made a provision of Income Generation Activity (IGA) to set up a grocery shop at the village.

Now, all grocery items are available in the village and people of the village limit their dependence on K.Gumma market, which is 42 KM away from the village.

At the present, Arjun expressed his pleasure by getting a good amount of cash by selling grocery items in the village & capable enough to feed his 4 members family without any hassle. He said "a big thank you to OTELP Plus, ITDA Malkangiri team for this immense support & made him aware how to be self sufficient & self sustain".







Training to SHG members on Siali leaf plate stitching, ITDA Baliguda



Training to SHG members on Siali leaf plate stitching, ITDA Baliguda



Distribution of Diesel pumpset to tribal farmers supported under SCA TSS, ITDA Champua

# Success Stories - 07

## Livelihood Improvement

### Through Grocery Shop

#### Village Profile:

Bara is one of the revenue village of Mathili block, G.P. Kartanpali in Malkangiri district . The villagers formed a VDC named as Baruadeimata VDC. The total household in the village is 40 & population in the village is 250. Out of 40 HHs 85 % of the HH belongs under poor category. Villagers are mostly dependent on the agriculture and NTFP products for their survival. They cultivate mostly paddy, millets and pulses such as black gram, red gram, etc.

#### Beneficiary Identification:

"Development Initiative Fund" under State plan is a vital funding component in Annual Work Plan & Budget (AWPB), OTELP Plus to support vulnerable family, particularly landless poor family and differently abled persons. The fund helps towards the economic upliftment of the ultra poor by providing them a sustainable livelihood measures.

After formation of VDC, while assessing the need of the village, it has come to the notice that the village doesn't have a single grocery shop. During the VDC meeting, the VDC members revealed that they have to go to village Kiang, Mathili and other villages for purchase of daily grocery and other household needs. This is causing major inconvenience in terms of money and time. Lack of Grocery shop also ensured that they are at the mercy of the other villages, and sometimes they are forced to walk for long distance. Hence a grocery shop in the village is an urgent need. After discussion with villagers, it has come out that Mr Baliram Durua is an unemployed and landless youth and unable to pursue the profession due to financial constraints. Due to not getting earning opportunity in native area he has to depend upon other state to earn his livelihood.

He constantly migrates to Andhra Pradesh to generate his livelihood and maintain his family. In this context villagers nominate his name to get the support and start any small business of grocery shop. He has also passed 5th class so he can manage grocery shop fairly. He was also greatly enthusiastic to avail help to start a fair earning. Hence it was finalized by the VDC to help M. Baliram Durua to start a grocery shop in the Bara village through OTELP Plus programme. The fund under DIF component was placed to the VDC and OTELP Plus, ITDA, Malkangiri extended all kind of support to Baliram to start the shop. The shop was started on dated 01.03.2020 by investing Rs. 30,000/- (Rupees Thirty Thousand). It was said by the villagers that during peak times, it will save money and more importantly time for everyone.

A small orientation session was conducted to impart training on sale and manage the Grocery Shop. Initially the whole seller supplied grocery products to Bara village from the Mathili. Now payment was processed by the VDC to the whole seller on delivery of goods to Mr.Baliram Durua to start the business.

A small orientation session was conducted to impart training on sale and manage the Grocery Shop. Initially the whole seller supplied grocery products to Bara village from the Mathili. Now payment was processed by the VDC to the whole seller on delivery of goods to Mr.Baliram Durua to start the business.





Vegetable cultivation by progressive farmers under RKVY, Raikia ITDA Balliguda



Vegetable Cultivation in Kumari & Bilapagha village of Jashipur Block by different Progressive farmers.



VDC meeting at M. Keragaon, ITDA Nabarangpur

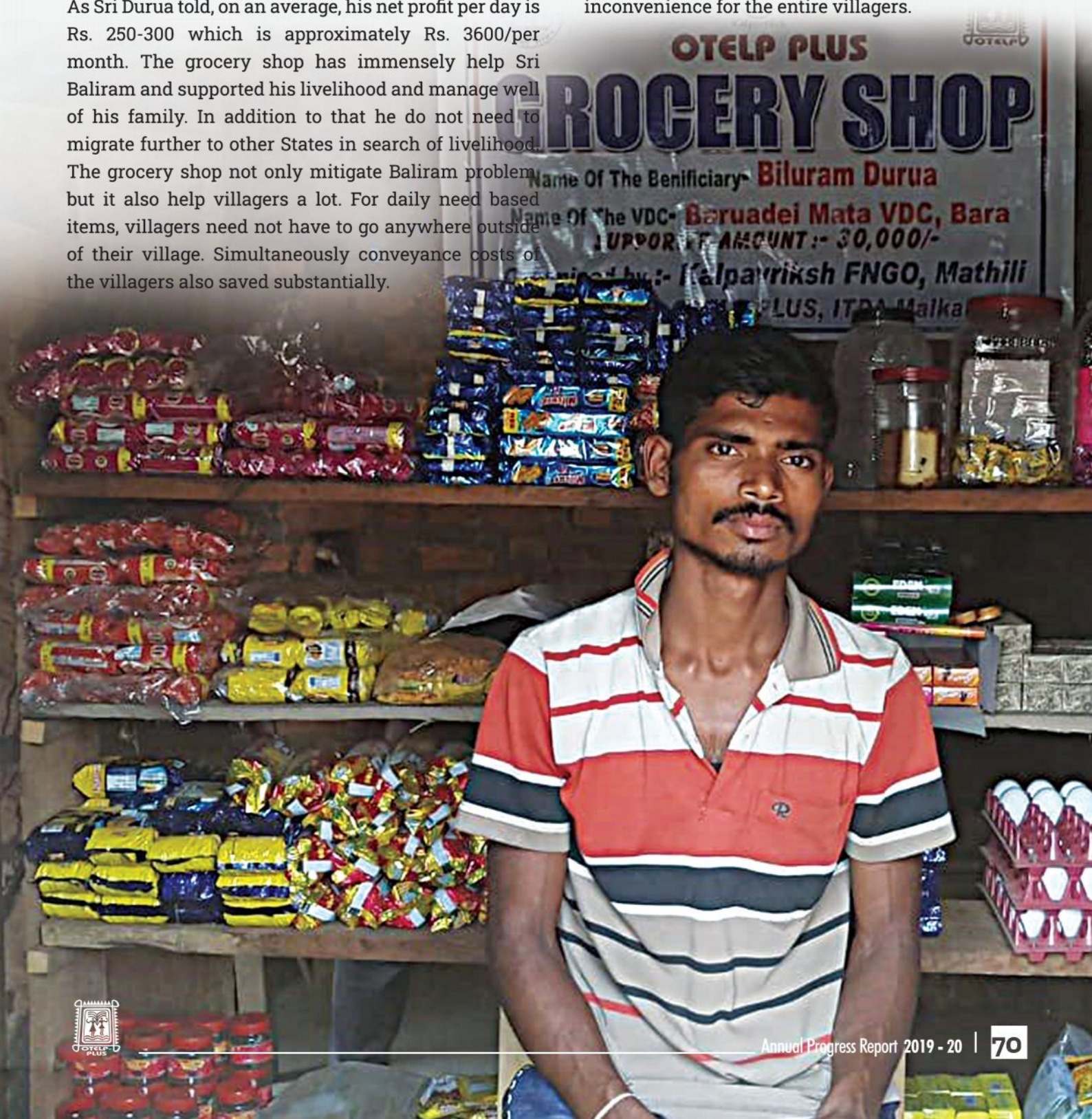


### Benefits to Beneficiary

At present, Sri Baliram Durua selling the grocery items to his own villagers as well as people from nearby hamlets and earning about Rs.2000 to 2500/- per day . As Sri Durua told, on an average, his net profit per day is Rs. 250-300 which is approximately Rs. 3600/per month. The grocery shop has immensely help Sri Baliram and supported his livelihood and manage well of his family. In addition to that he do not need to migrate further to other States in search of livelihood. The grocery shop not only mitigate Baliram problem but it also help villagers a lot. For daily need based items, villagers need not have to go anywhere outside of their village. Simultaneously conveyance costs of the villagers also saved substantially.

### Conclusion

Encouraging grocery shop has not only significantly improved the livelihoods of the person; it has also reduced costs and inconvenience for the entire villagers.





WAT at Purunagada  
under MGNREGS, ITDA Baliguda



Monitoring & Field Supervision by Programme Director  
at ITDA Kuchinda along with presence of PA ITDA and  
other subject matter specialists



Vegetable Cultivation in Kumari & Bilapagha village of  
Jashipur Block by Progressive farmers.

# Success Stories - 08

## Pain pays the income of each precious thing-

### Kumari Labeti, a special one

In order to bring the tribal into the mainstream of development process, Odisha Tribal Empowerment and Livelihood Programme Plus (OTELP plus) funded by Govt. of Odisha is implemented in ITDA-Gunupur of Rayagada district wherein seven tribal dominant blocks are identified. Keeping view of the benefit of tribal beneficiary, Development Initiative Fund (DIF) under OTELP Plus is dedicated for the overall development not only for individual to target rather the community itself to be tagged.

Kumari Labeti (differently abled), a recipient of Income generation Activity (IGA) under DIF component received Rs. 30000.00 in the FY 2019-20 to furnish her great art of stitching to earn more and fulfill all her dreams which she dreamt about.

She is residing in Bada Pandrakhal Village of Dangsorada GP in Chandrapur Block with her mother. She is always dreaming about to explore new things to earn more. However, her tailoring unit got a new direction with the help from OTELP Plus project to expand her innate quality.

Keeping view of her interest and situation, Nagabali VDC along with personnel from FNGO & ITDA identified her as a recipient under IGA and she brought a new sewing machine along with some other essential equipment with the support. Nevertheless, she proved herself as an entrepreneur & starts her income from day one. By avoiding the thought of impediment of her disability, she believes in customer satisfaction on her produces is the primary choice.

Now, slowly & steadily she gets order from nearby villages like Barikhal & Nauduguda and capable enough to manage her family in a sustainable way. Kumari Labeti says "big thanks to ITDA Gunupur team & it is better to have a regular income source than to be in dilemma to have one".





Potato harvesting @1650 Quintal during lockdown period by the Farmer under state plan at village -Purunapani, Telkoi, ITDA Keonjhar



Workshop on preparation of AWPB 2019-20 launched by P.D Otelp plus at IMAGE, BBSR



Mustard cultivation supported under RKVY at village Parudipsahi, ITDA Champua



# Success Stories - 09

## Farming practice with

### Assured irrigation creates calm & resilient Nation

Irrigation helps to grow agricultural crops, maintain landscapes and revegetate disturbed soils in dry areas. Hence, the conservation of water has become increasingly important as the demand for this continues to rise rapidly and the regular source of rain is becoming scarce due to climatic change. However, this growing concern over water losses in agricultural systems is need critical intervention wherein conserving and managing water in today's world is make the farmers in advantage.

Scanty & erratic rainfall during the Khariff season is seen commonly in Odisha where most of the farmer suffers to work on field. Similarly, people of Padmakesharipur village face problems in khariff season to sustain their paddy which is their main source of food habits. Padmakesharipur is a small tribal dominated village of Nahabeda Gram Panchayat under Jhumpura Block of Keonjhar district. Consisting of 36 household wherein most of the villagers are predominantly engaged in agricultural activities. Another village Nuapadmakesharipur is only 500 meter away from Padmakesharipur having 24 households situated at the southern part of Padmakesharipur also facing the same problem. As because both of these villagers are depending upon Paddy cultivation, water scarcity creates panic among them.

Since the occupations of all households of these villages are agriculture, they are quite industrious in their thinking to make their agriculture field always convenient. Searching for the opportunity to renovate their Pani Mahara (An old abandoned earthen Canal) for supplementary irrigation was a major thrust of the people which was blocked since 20 years back even more than that, said by the elder persons of Padmakesharipur village.

To make this abandoned Pani Mahara alive Mr. Surendra Kumar Bhoi, Secretary of Padmkesharipur Gram Unnayan Sangha, mobilized & convinced the households of these two villages and discussed with the FNGO & ITDA staff on its way out. The proposal was appreciated and placed in Pallisbha and Gramsabha for approval afterwards & finally approved by PD, DRDA, Keonjhar. Accordingly, the earthen canal work started immediately after the lockdown was lifted partially during the third week of May 2020.

It took five weeks of time to complete the canal excavation work and almost 1000 meter long canal is exactly started from the nearest village pond, known as Rugudibandh. It is mainly channelized surplus water from Rugudibandh to agriculture field. The excavation work was completed during June wherein 465 man-days generated to create 1 kilometer long canal..

The water flow started in canal when the continuous rainfall occurred in July first week which looks pretty. Finally, the work turned up as an assured irrigation channel for covering 15 acres of land to the absolute paddy fields of Padmakesharipur and Nuapadmakesharipur farmers. It was highlighted when people of these two villages shared their happiness before PA-ITDA, Champua on 15th July and said necessity of irrigation has now been fulfilled.



Camera





Bush cleaning Community pond  
khuntapada, Sadangi GP ,Champua Block



Pit digging for Cashew plantation at vilage -  
Tulagurum, under MGNREGS, ITDA Malknagiri



Poultry Unit supported under state plan at vilage  
Chingudishorey, ITDA Nabarangpur

# Success Stories - 10

## Self reliant and self sustainable

### Growth of a SHG

The pandemic has brutally exposed the vulnerabilities of some of the best practices systems in the State. The outbreaks of Covid-19, a rare deadly pandemic disease created horrific situation basically upon the rural poor people of the village those who dependent on daily earnings. With the announcement of the nationwide lockdown around 22 woman of Jodabandh village of Banki G.P. of Sundergarh district turned jobless as these members of Jodabandh village self help groups are running tailoring unit in their village.

However, thanks to their skills, they stands tall to earn a handsome amount of Rs, 20,000 within a week's time after sewing 5000 mask for State Government to distribute among the medical health worker and a brand selling with a recognition of (ADISHA) outlet at TDCCOL Bhubanewsar. When they came to know about the importance of masks and its rising demand, these women decided to put their all efforts to prepare mask.

"We learnt through different mediums that people were finding it hard to get masks to protect themselves. We all had stock of cloth with us and so we started making masks at our homes," said Soron Soy, the President of the group of self-help group at jodabandh village.

The women members are tirelessly preparing 200 masks each day by using "KHADI MATERIAL" which can be reusable after washing & proper sanitization. With this endeavor they are earning money even during lockdown period. However, they continue to manufacture more number of masks so that everybody can have it.

Besides selling these masks to the government, the group members are selling the masks in local market and also provided in the training programme of OTELP Plus in a wholesale price. Even sometimes they provided the mask for free to the community those who really needs but have no funds to buy.

Apart from earning for themselves, these women group members are also lending support to other groups to initiate small ventures at village level wherein these groups are involved in making soaps, incense sticks, tailoring work, etc.





Support to Farmers for YAM cultivation at village-Kandhaguda, Block-Khairput, OTELP Plus, Malkangiri supported under R.K.V.Y 2019-20



Earthen Cannel (MGNREGA) at Padmakesharipur Village ,Nahabeda G.P Jhumpura Block , OTELP Plus ITDA Champua



Excavation work for community pond at Khntapada, GP-Sadangi ITDA Champua



# Success Stories - 11

## Agriculture

### A ray of hope for tribals (ITDA–Panposh)

Shri Salik Ram Pradhan around 45 years, a tribal male inhabitant of Lindidiri Village under Urmei Gram Panchayat of Nuagaon Block situated over 45 KMs away to the west of the Block Headquarter and 155 KM from District Head Quarter is selected by the members of VDC under SCA-TSS scheme to cultivate Tomato cultivation in one acre of land after seeing his interest and skill.

As livelihoods of the majority of the village population depend on agriculture but due to very limited and fragmented land holding most of the farmers have unable to utilise their skill on farming. The unskilled workforce is mainly engaged as wage labour in and around their villages during the agriculture season. The village has a high concentration of marginal farmers who practice subsistence farming.

Looking at the situation of village and the interest of Salik, OTELP Plus, Panposh Team provided support like seed, fertilizer, vermin compost and pesticides along with handholding support and provision of technical knowhow through Line Department Officials.

But due to critical situation of COVID-19 pandemic, he faced challenges to harvest Tomato with proper maintaining of social distance. OTELP Plus team along with the experts of FNGO helped him during this crisis time and suggested him to harvest Tomato in a phased manner. Till date he harvested 30 Qtls of Tomato. OTELP Plus team has identified local traders along with local market to set up a channel for selling of Tomato wherein he received Rs. 6500.00 to Rs. 8000.00 profit in the first phase.





Farm Pond at Chitapari of Khairput block under OTELP Plus ITDA Malkangiri.



Multi-Purpose Farm Pond in convergence with MGNREGS at village-Borikhal, Chandrapur Block, OTELP Plus Gunupur Unit.



chili



# Success Stories - 12

## Stay home & Stay safe

(ITDA-Nawarangpur)

When the entire world was locked against the spread of deadly pandemic Corona virus, OTELP, Nabarangpur sensitized its community service providers/ VDC volunteers, SHG leaders and tribal communities to create awareness on social distancing, hand washing and using of masks through WHATSAPP/ telephone calls, one to one interaction & small mobilization meetings at hamlet level in villages and received good response from different tribal villages like Bodoni village, Jharigaon during the lockdown period.

Earlier, neither the communities nor VDC functionaries of that village had known about the badly effect of noble corona virus. The OTELP Plus staffs, CSP, community leaders joined hand with village ASHA, AWW & ANM worker and sensitized communities with close coordination of ITDA, block & district administration. ITDA issued pass for movement of Experts and CSPs for field visit to different villages and continuance of different livelihood programmes during lockdown period. The CSPs & volunteers continued door to door contact and spread awareness messages in villages.

The village CSP along with ASHA worker facilitated communities for maintaining social distancing during PDS rice distribution, purchase of ration items from grocery shops in villages, collection of water from tube wells. They imparted safe hygiene practices, do's and don'ts during lockdown and preparedness at individual and community level with involvement of village development committee and their PRI representatives.

Finally, the SHG members & communities came forward and restricted outsider entry to the village. They also facilitated youths in home quarantine those had came from outside the district & state within 15 days before. Each family kept distance from another family through avoiding community sports, cultural functions, marriages and other social gathering. They met communities as per necessities with abiding social distancing, wearing of mask & hand washing discipline.

These awareness motivated communities for staying in their home for safe of their families & life. Their initiatives have made organized and promoted hygienic practices among communities for long term habit & safe of life. It also checked consumption of liquors among themselves which has improved their health immunity system and close emotional sharing with togetherness for future preparedness for combating noble corona virus.





Groundnut cultivation at village-Jhadiaguda, Khairput block, ITDA Malknagiri under SCA TSS



Tomato cultivation under Livelihood Cluster Planning, SCA TSS, ITDA Panposh



Green chilly cultivation under SCA TSS, ITDA Champua

# CHAPTER 8

## Administrative Structure

Sl No	Name of the District (Sch. Area/TSP Area)	Name of TSP block	Name of administrative structure existing in the Schedule Areas
1	2	3	4
01	Mayurbhanja	Karanja, Bangiriposhi, Thakurmunda, Suliapada	<b>District Collector: Chairman</b>
02	Sundergarh	Gurundia & Nuagaon	<b>Project Administrator</b>
03	Keonjhar	Banspal, arichandanpur, Telkoi, Champua, Jhumpura & Joda	<b>Subject Matter Specialist:</b> 1. Programme Officer (Planning, Monitoring & Evaluation) 2. Programme Officer Capacity Building 3. Watershed Development Officer 4. Programme Officer Agriculture 5. Finance Officer
04	Kandhamal	Baliguda, K.Nuagaon, Daringibadi,	
05	Gajapati	R.Udayagiri, Mohana	
06	Koraput	Nandapur, Dasmantpur, Pottangi, Semiliguda	<b>Support Staff:</b> 1. Accounts Clerk 2. Office Assistant
07	Rayagada	Kashipur, Muniguda, Gudari, Chandrapur, Bisamakatak, Ramnaguda & Gunupur	<b>Facilitating NGO</b> 1. Expert Livelihoods cum Social 2. Expert Engineer 3. Expert Accounts cum Data Management.
08	Nabarangapur	Papadahandi, Jharigaon & Kosagumuda	
09	Malkangiri	Mathili, Khairiput, Korkunda & Chittrakonda.	<b>Village Development Association</b> 1. VDC Secretary 2. VDC President 3. Community Service Provider
10	Kalahandi	Th.Rampur & Lanjigarh	
11	Sambalpur	Kuchinda, Jamankira and Bamra	





Piped Water Supply project for Domestic use under D.I.F at Jamuposi Village, OTELP Plus ITDA Karanjia.



Procurement of 450 K.G of hill broom by Jalatar VDK from SHGs, ITDA Gunupur



Distribution of Hybrid vegetable seeds to farmers under SCA TSS, ITDA Panposh

# News Clipping

## କାରୋନା ସଂକ୍ରମଣକୁ ମୋଡ଼ାଉଥିବା ପରିବା ଚାଷ

### ଉପକୃତ ହେଉଛନ୍ତି ୧୪ ଆଦିବାସୀ ପରିବାର



କାରୋନା ସଂକ୍ରମଣକୁ ମୋଡ଼ାଉଥିବା ପରିବା ଚାଷ ଉପକୃତ ହେଉଛନ୍ତି ୧୪ ଆଦିବାସୀ ପରିବାର। ଏହି ଲେଖାଟି ଆଦିବାସୀ ଲୋକଙ୍କର ସ୍ୱାସ୍ଥ୍ୟ ଓ ଜୀବନ ସୁରକ୍ଷା ପାଇଁ ଲାଭଦାୟକ ହୋଇଛି।

## କମିଦେଇଛି ଜୀବନ ଚାକିରି ନୁହେଁ; ଚାଷ ଭଲ

କମିଦେଇଛି ଜୀବନ ଚାକିରି ନୁହେଁ; ଚାଷ ଭଲ। ଏହି ଲେଖାଟି ଚାଷୀ ଲୋକଙ୍କର ସ୍ୱାସ୍ଥ୍ୟ ଓ ଜୀବନ ସୁରକ୍ଷା ପାଇଁ ଲାଭଦାୟକ ହୋଇଛି।

## ଲକ୍ଷ୍ୟାଧିକ ଟଙ୍କା ଆୟ କଲେ ପରିବା ଚାଷୀ

ଲକ୍ଷ୍ୟାଧିକ ଟଙ୍କା ଆୟ କଲେ ପରିବା ଚାଷୀ। ଏହି ଲେଖାଟି ଚାଷୀ ଲୋକଙ୍କର ସ୍ୱାସ୍ଥ୍ୟ ଓ ଜୀବନ ସୁରକ୍ଷା ପାଇଁ ଲାଭଦାୟକ ହୋଇଛି।



## କାରୋନା ଲଢ଼େଇ

### ଡର ଭିତରେ ସ୍ୱାବଲମ୍ବୀ ୩୪ ଆଦିବାସୀ ପରିବାର

କାରୋନା ଲଢ଼େଇ ଡର ଭିତରେ ସ୍ୱାବଲମ୍ବୀ ୩୪ ଆଦିବାସୀ ପରିବାର। ଏହି ଲେଖାଟି ଚାଷୀ ଲୋକଙ୍କର ସ୍ୱାସ୍ଥ୍ୟ ଓ ଜୀବନ ସୁରକ୍ଷା ପାଇଁ ଲାଭଦାୟକ ହୋଇଛି।



## ଖୁଣ୍ଟାପତ୍ତାରେ ଏକ ଦିବସୀୟ ଚାଷ ସମାପ୍ତ ହେଉଛି ଶିବିର

ଖୁଣ୍ଟାପତ୍ତାରେ ଏକ ଦିବସୀୟ ଚାଷ ସମାପ୍ତ ହେଉଛି ଶିବିର। ଏହି ଲେଖାଟି ଚାଷୀ ଲୋକଙ୍କର ସ୍ୱାସ୍ଥ୍ୟ ଓ ଜୀବନ ସୁରକ୍ଷା ପାଇଁ ଲାଭଦାୟକ ହୋଇଛି।



## ଆଶା ଦେଖାଇଲେ ଆଦିବାସୀ ଏଟିଏମ୍ ପାଇଟିଛି କୁକୁଡ଼ା ଚାଷ

ଆଶା ଦେଖାଇଲେ ଆଦିବାସୀ ଏଟିଏମ୍ ପାଇଟିଛି କୁକୁଡ଼ା ଚାଷ। ଏହି ଲେଖାଟି ଚାଷୀ ଲୋକଙ୍କର ସ୍ୱାସ୍ଥ୍ୟ ଓ ଜୀବନ ସୁରକ୍ଷା ପାଇଁ ଲାଭଦାୟକ ହୋଇଛି।



ଅଳ୍ପ ସମୟ ମଧ୍ୟରେ ବିକ୍ରି ହୋଇ ଯାଇଥିବା ଚାଷୀ ଲୋକଙ୍କର ସ୍ୱାସ୍ଥ୍ୟ ଓ ଜୀବନ ସୁରକ୍ଷା ପାଇଁ ଲାଭଦାୟକ ହୋଇଛି।

ଲକ୍ଷ୍ୟାଧିକ ସଫଳତା ଆଣିବା ପାଇଁ ଚାଷୀ ଲୋକଙ୍କର ସ୍ୱାସ୍ଥ୍ୟ ଓ ଜୀବନ ସୁରକ୍ଷା ପାଇଁ ଲାଭଦାୟକ ହୋଇଛି।



# Down the Memory lane



## **OTELP Plus**

### **Programme Support Unit**

TDCCOL Building, 2nd Floor, Rupali Square P.O. Bhoi Nagar,  
P.S. Sahid Nagar, Bhubaneswar - 751 022  
Ph.: 0674 - 2541772 e-mail: [support@otelp.org](mailto:support@otelp.org)  
Website: [www.otelp.org](http://www.otelp.org)